



November 2017 - September data

El claims and recipients decline with strong economy

The number of B.C. employment insurance (EI) recipients tumbled in September to a level last seen in 2008, which preceded the last recession. Total beneficiaries declined 5.9 per cent to 46,810 persons (seasonally-adjusted), which marked a 15 per cent year-over-year decline. Total initial and renewal claims fell four per cent from August to 23,950, and while monthly levels fluctuate, the trend has similarly declined to pre-recession levels.

Fewer recipients and claims are consistent with a robust labour market and economic conditions, which has generated average employment growth of 3.7 per cent. The number unemployed persons declined by about 10 per cent on a year-to-date basis through three quarters, while the number of persons not working or unemployed also slipped from a year ago. EI counts also decline due to benefits expiration, but we would expect that to be observed in weaker unemployment trends which has not been the case.

Most occupations showed a decline in EI recipients compared to August, with significant declines in administrative and financial supervisors (down 13 per cent), education services (-21 per cent), and trades (down 6.5 per cent) leading the way.

Regionally, EI counts fell across provincial economic regions. The sharpest month-to-month declines were in the Lower Mainland-Southwest (down 8.9 per cent), and the southern interior (down about five per cent), and the Cariboo. Year-over-year, EI counts have trended lower across all regions of the province.

Municipalities that experienced a rise in recipients from August on a seasonally-adjusted basis included Port Alberni (up 17 per cent) which rebounded after an August decline, and Powell River up 13.6 per cent). Levels remain high in wildfire impacted Williams Lake, which saw a 15 per cent drop from August, but 28 per cent increase from a year ago.

Bryan Yu

Deputy Chief Economist

byu@central1.com

604.742.5346 Mobile: 604.649.7209

Summary Table: B.C. Employment Insurance Count Growth

	month-to-month % change		year-to-year % change		12-mth avg, y/y % change	
	2017M08	2017M09	2017M08	2017M09	2017M08	2017M09
BC	-2.0	-5.9	-9.5	-15.4	-1.2	-2.6
Lower Mainland-SW	-10.3	-8.9	-9.5	-15.4	-6.9	-7.1
Vancouver Island & Coast	-0.1	-4.9	-13.7	-17.7	-7.6	-8.5
Thompson-Okanagan	-0.2	-4.8	-11.1	-20.5	9.7	6.6
Kootenay	-2.7	-1.2	-10.4	-12.7	15.1	13.1
Cariboo	-4.0	-7.4	3.9	-10.9	7.6	5.5
North Coast & Nechako	-1.0	-4.4	1.3	-12.2	9.9	8.3
Northeast	-5.1	0.4	-52.2	-52.1	-14.1	-21.7

Notes and Definitions

The Employment Insurance Trends report is a supplement to Central 1 Credit Union Economics' monthly Regional Labour Market Report which reviews the latest Labour Force Survey (LFS) data over an identical reference period. Labour Force data is the only timely and relevant source for regional employment counts, labour force participation, and unemployment rates, but are limited in geographic scope. This Employment Insurance Trends report provides supplemental labour market information on changes in unemployment trends albeit and at more detailed and wider geographic areas than provided in LFS data. Additionally, EI data is less volatile than LFS information given EI counts are a census from administrative data obtained from Employment and Social Development Canada, in contrast to the LFS household survey.

EI and LFS unemployment counts are highly correlated. However, caution is warranted in interpreting EI counts following a sharp uplift in unemployment. Lower unemployment does lower EI counts, but in a period of persistently weak economic activity and high unemployment, EI counts may decline given limited duration of benefits even as unemployment remains elevated (see EI definition below). EI beneficiary counts over time follow unemployment and reflect both how quickly a regional economy recovers and maximum EI duration. More relevant are upward movements or spikes to EI counts, which point to increased stress in local labour markets.

Definition

EI regular benefits are offered to people who have lost their employment through no fault of their own (for example, because of a shortage of work or because they were employed in seasonal work) and who are ready, willing, and capable of working each day but unable to find work. The Employment Insurance (EI) program offers temporary financial assistance to Canadians and individuals who are legally entitled to work in Canada, have a valid Social Insurance Number and remain in Canada during their benefit period.

The number of beneficiaries is a measure of all people who received EI benefits from a reference period that coincides with the reference week of the Labour Force Survey (LFS)

EI regular benefits expire. Provided that individuals meet eligibility requirements, individuals can receive EI from 14 weeks to a maximum of 45 weeks. Actual length of benefits depend on the unemployment rate in the region at time of individual filing, and amount of insurable hours accumulated in the last 52 weeks or during the last claim. Individuals within regions with higher unemployment rates are eligible for a longer EI benefit duration. For example, maximum EI duration in the Vancouver economic region is 38 weeks, and 40 weeks in the Toronto economic region (at this writing). In comparison, the maximum in Northern Alberta is 45 weeks. Benefits do not change if a beneficiary moves regions following the commencement of a benefit period.

Data Sources:

This report is based on data adapted from Statistics Canada from the following Cansim Tables:

276-0035 Employment Insurance Program (EI), beneficiaries by province, census division, total and regular income benefits, declared earnings, sex and age; British Columbia; Regular benefits; Both sexes; 15 years and over

276-0034 Employment Insurance program (EI), beneficiaries receiving regular income benefits by province and census metropolitan category, seasonally adjusted; British Columbia

276-0022 Employment Insurance program (EI), beneficiaries receiving regular income benefits by province, declared earnings, sex and age, seasonally adjusted; British Columbia; Regular benefits; Both sexes; 15 years and over

Seasonal-adjustment of regional data and all calculations are computed by Central 1 Credit Union. Provincial seasonal-adjustment is provided by Statistics Canada. Monthly information

**British Columbia
Vancouver Island and Coast**

Capital RD
Cowichan Valley RD
Nanaimo RD
Alberni-Clayoquot RD
Strathcona RD
Comox Valley RD
Powell River RD
Mount Waddington RD
Central Coast RD

Lower Mainland–Southwest

Fraser Valley RD
Greater Vancouver RD
Sunshine Coast RD
Squamish-Lillooet RD

Thompson–Okanagan

Okanagan-Similkameen RD
Thompson-Nicola RD
Central Okanagan RD
North Okanagan RD
Columbia-Shuswap RD

Kootenay

East Kootenay RD
Central Kootenay RD
Kootenay Boundary RD

Cariboo

Cariboo RD
Fraser-Fort George RD

North Coast

Skeena-Queen Charlotte RD
Kitimat-Stikine RD

Nechako

Bulkley-Nechako RD
Stikine REG

Northeast

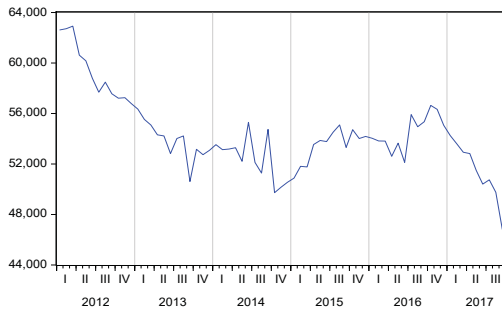
Peace River RD
Northern Rockies RD

Employment Insurance

Release date	Reference period
Wednesday, January 18, 2017	November 2016
Thursday, February 16, 2017	December 2016
Thursday, March 23, 2017	January 2017
Thursday, April 20, 2017	February 2017
Thursday, May 18, 2017	March 2017
Thursday, June 22, 2017	April 2017
Thursday, July 20, 2017	May 2017
Thursday, August 24, 2017	June 2017
Thursday, September 21, 2017	July 2017
Thursday, October 19, 2017	August 2017
Thursday, November 23, 2017	September 2017
Tuesday, December 19, 2017	October 2017
Thursday, January 18, 2018	November 2017
Thursday, February 15, 2018	December 2017
Thursday, March 22, 2018	January 2018

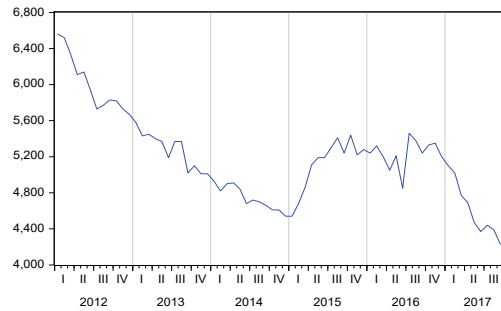
Section 1: British Columbia

**British Columbia
E.I. Beneficiaries**



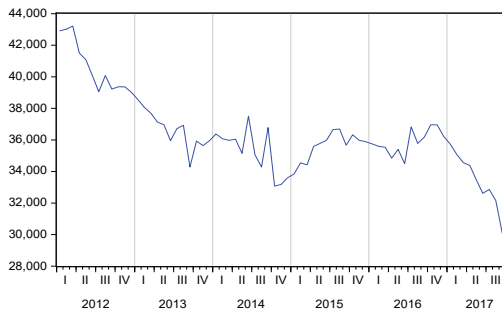
Source: Statistics Canada and Central 1 Credit Union.

**British Columbia
Age 15-24 E.I. Beneficiaries**



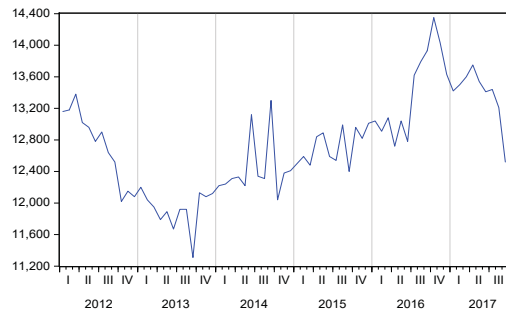
Source: Statistics Canada and Central 1 Credit Union.

**British Columbia
Age 25-54 E.I. Beneficiaries**



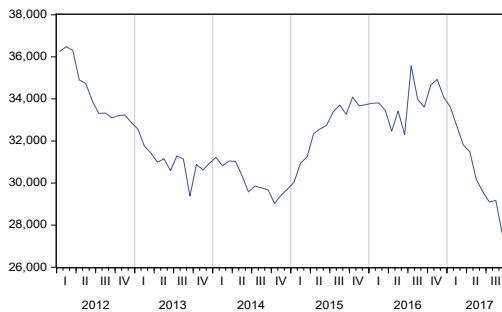
Source: Statistics Canada and Central 1 Credit Union.

**British Columbia
Age 55+ E.I. Beneficiaries**



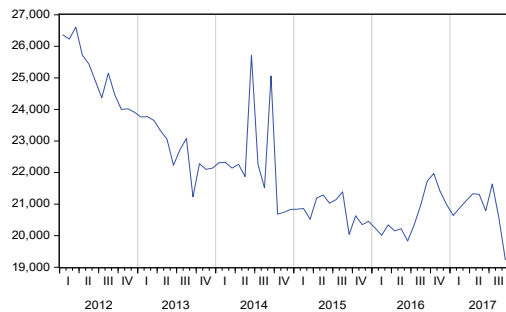
Source: Statistics Canada and Central 1 Credit Union.

**British Columbia
Male E.I. Beneficiaries**



Source: Statistics Canada and Central 1 Credit Union.

**British Columbia
Female E.I. Beneficiaries**

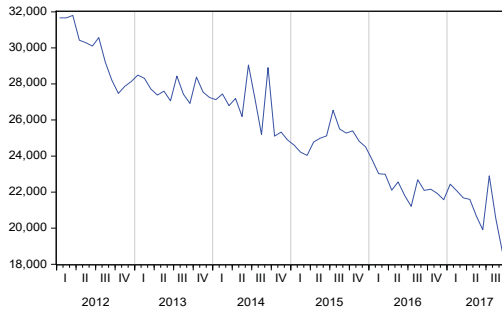


Source: Statistics Canada and Central 1 Credit Union.

BC Province Average Annual EI Beneficiaries						
	Total	Male	Female	15 - 24	25-54	55+
2012	59,398	34,302	25,099	6,013	40,658	12,731
2013	53,843	31,063	22,778	5,275	36,651	11,919
2014	52,433	30,127	22,308	4,742	35,257	12,436
2015	53,455	32,646	20,811	5,125	35,613	12,717
2016	54,503	33,836	20,666	5,229	35,863	13,412
BC Province Average Monthly EI Beneficiaries						
	Total	Male	Female	15 - 24	25-54	55+
2016M08	54,950	33,980	20,970	5,380	35,780	13,790
2016M09	55,340	33,610	21,730	5,240	36,170	13,930
2016M10	56,640	34,660	21,970	5,330	36,960	14,350
2016M11	56,330	34,930	21,400	5,350	36,950	14,030
2016M12	55,060	34,080	20,980	5,200	36,220	13,630
2017M01	54,250	33,620	20,640	5,100	35,730	13,420
2017M02	53,600	32,720	20,880	5,020	35,080	13,500
2017M03	52,930	31,810	21,110	4,770	34,560	13,600
2017M04	52,820	31,490	21,330	4,690	34,380	13,750
2017M05	51,490	30,180	21,310	4,470	33,480	13,540
2017M06	50,400	29,600	20,790	4,370	32,620	13,410
2017M07	50,740	29,100	21,640	4,440	32,860	13,440
2017M08	49,750	29,170	20,580	4,390	32,150	13,210
2017M09	46,810	27,570	19,240	4,230	30,060	12,520
month-to-month % change						
2017M08	-2.0	0.2	-4.9	-1.1	-2.2	-1.7
2017M09	-5.9	-5.5	-6.5	-3.6	-6.5	-5.2
year-to-year % change						
2017M08	-9.5	-14.2	-1.9	-18.4	-10.1	-4.2
2017M09	-15.4	-18.0	-11.5	-19.3	-16.9	-10.1
12-mth avg, y/y % change						
2017M08	-1.2	-4.8	4.7	-7.5	-2.4	4.7
2017M09	-2.6	-6.1	3.2	-8.7	-3.7	3.0

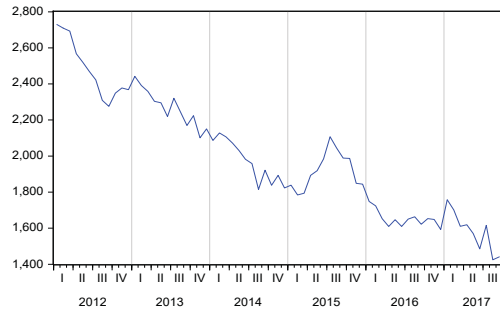
Section 2: Lower Mainland-Southwest

**Lower Mainland Southwest DR
E.I. Beneficiaries**



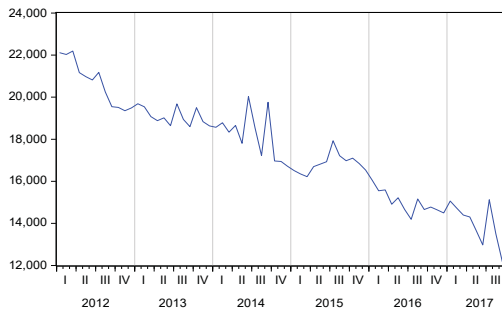
Source: Statistics Canada and Central 1 Credit Union.

**Lower Mainland Southwest DR
Age 15-24 E.I. Beneficiaries**



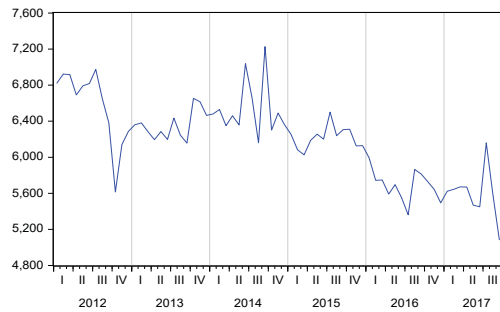
Source: Statistics Canada and Central 1 Credit Union.

**Lower Mainland Southwest DR
Age 25-54 E.I. Beneficiaries**



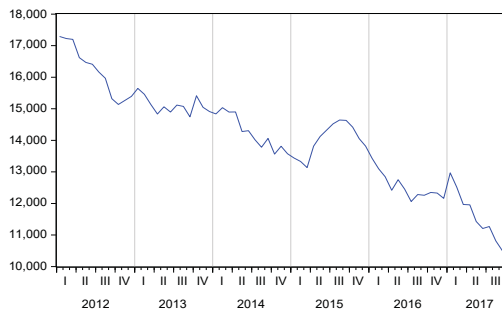
Source: Statistics Canada and Central 1 Credit Union.

**Lower Mainland Southwest DR
Age 55+ E.I. Beneficiaries**



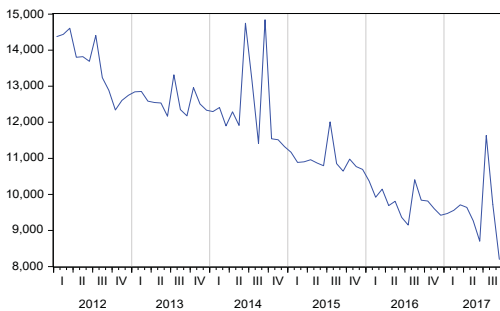
Source: Statistics Canada and Central 1 Credit Union.

**Lower Mainland Southwest DR
Male E.I. Beneficiaries**



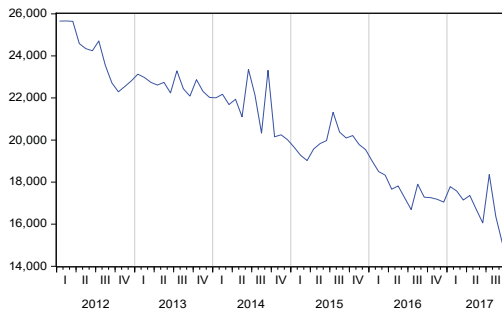
Source: Statistics Canada and Central 1 Credit Union.

**Lower Mainland Southwest DR
Female E.I. Beneficiaries**



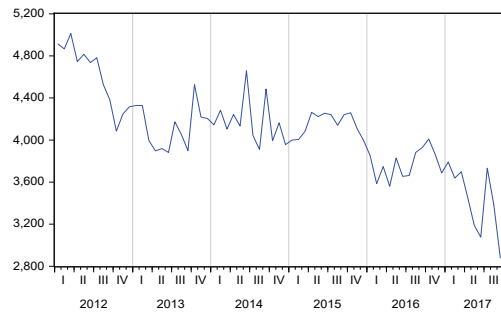
Source: Statistics Canada and Central 1 Credit Union.

Greater Vancouver RD E.I. Beneficiaries



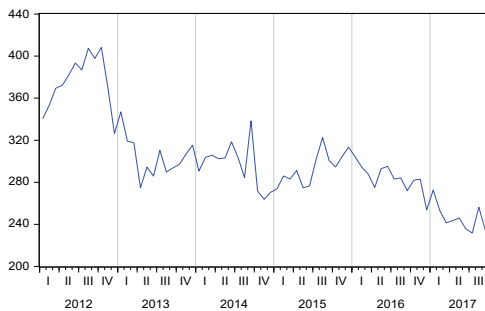
Source: Statistics Canada and Central 1 Credit Union.

Fraser Valley RD E.I. Beneficiaries



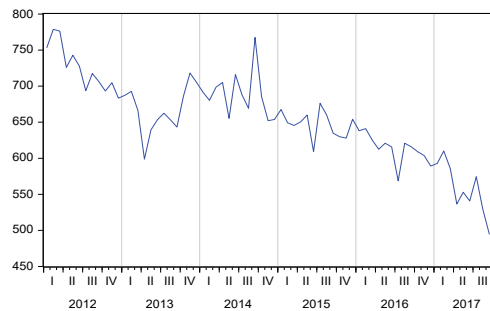
Source: Statistics Canada and Central 1 Credit Union.

Sunshine Coast RD E.I. Beneficiaries



Source: Statistics Canada and Central 1 Credit Union.

Squamish-Lillooet RD E.I. Beneficiaries



Source: Statistics Canada and Central 1 Credit Union.

Lower Mainland-Southwest DR Average Annual EI Beneficiaries						
	Total	Male	Female	15 - 24	25-54	55+
2012	29,938	16,303	13,634	2,508	20,808	6,623
2013	27,799	15,149	12,651	2,281	19,130	6,393
2014	26,706	14,325	12,384	1,984	18,190	6,535
2015	24,957	13,964	10,996	1,908	16,837	6,218
2016	22,373	12,558	9,818	1,655	15,022	5,698
Lower Mainland-Southwest DR Average Monthly EI Beneficiaries						
	Total	Male	Female	15 - 24	25-54	55+
2016M08	22,688	12,282	10,406	1,663	15,159	5,866
2016M09	22,096	12,257	9,839	1,622	14,661	5,814
2016M10	22,161	12,346	9,815	1,653	14,778	5,730
2016M11	21,934	12,329	9,604	1,648	14,641	5,645
2016M12	21,581	12,160	9,421	1,593	14,495	5,494
2017M01	22,440	12,969	9,471	1,758	15,058	5,623
2017M02	22,072	12,515	9,557	1,702	14,726	5,645
2017M03	21,677	11,965	9,712	1,611	14,394	5,672
2017M04	21,595	11,955	9,641	1,619	14,306	5,670
2017M05	20,698	11,429	9,269	1,570	13,658	5,469
2017M06	19,910	11,207	8,703	1,485	12,974	5,451
2017M07	22,902	11,268	11,634	1,616	15,125	6,161
2017M08	20,533	10,813	9,720	1,425	13,514	5,594
2017M09	18,703	10,503	8,200	1,441	12,178	5,084
month-to-month % change						
2017M08	-10.3	-4.0	-16.5	-11.8	-10.7	-9.2
2017M09	-8.9	-2.9	-15.6	1.2	-9.9	-9.1
year-to-year % change						
2017M08	-9.5	-12.0	-6.6	-14.3	-10.9	-4.6
2017M09	-15.4	-14.3	-16.7	-11.1	-16.9	-12.5
12-mth avg, y/y % change						
2017M08	-6.9	-9.0	-4.3	-7.1	-8.2	-3.4
2017M09	-7.1	-8.8	-4.8	-6.5	-8.4	-3.6

Greater Vancouver RD Average Annual EI Beneficiaries						
	Total	Male	Female	15 - 24	25-54	55+
2012	24,183	13,164	11,023	1,962	17,010	5,215
2013	22,675	12,346	10,329	1,796	15,824	5,057
2014	21,555	11,561	9,993	1,533	14,886	5,136
2015	19,886	11,150	8,738	1,456	13,657	4,776
2016	17,704	9,989	7,716	1,244	12,079	4,381
Greater Vancouver RD Average Monthly EI Beneficiaries						
	Total	Male	Female	15 - 24	25-54	55+
2016M08	17,901	9,725	8,176	1,235	12,155	4,511
2016M09	17,280	9,653	7,626	1,194	11,752	4,334
2016M10	17,261	9,712	7,549	1,238	11,720	4,303
2016M11	17,183	9,736	7,447	1,248	11,676	4,259
2016M12	17,052	9,741	7,311	1,230	11,641	4,181
2017M01	17,784	10,334	7,449	1,330	12,136	4,318
2017M02	17,571	9,935	7,636	1,267	11,936	4,368
2017M03	17,151	9,510	7,641	1,189	11,594	4,368
2017M04	17,366	9,637	7,729	1,246	11,703	4,418
2017M05	16,708	9,262	7,446	1,232	11,197	4,279
2017M06	16,057	9,105	6,952	1,181	10,618	4,258
2017M07	18,363	9,091	9,272	1,292	12,303	4,768
2017M08	16,364	8,722	7,641	1,127	10,923	4,314
2017M09	15,095	8,510	6,586	1,140	10,022	3,933
month-to-month % change						
2017M08	-10.9	-4.1	-17.6	-12.8	-11.2	-9.5
2017M09	-7.8	-2.4	-13.8	1.2	-8.2	-8.8
year-to-year % change						
2017M08	-8.6	-10.3	-6.5	-8.7	-10.1	-4.4
2017M09	-12.6	-11.8	-13.6	-4.6	-14.7	-9.2
12-mth avg, y/y % change						
2017M08	-7.1	-8.9	-4.8	-5.7	-8.3	-4.2
2017M09	-7.0	-8.4	-5.1	-4.4	-8.2	-4.3

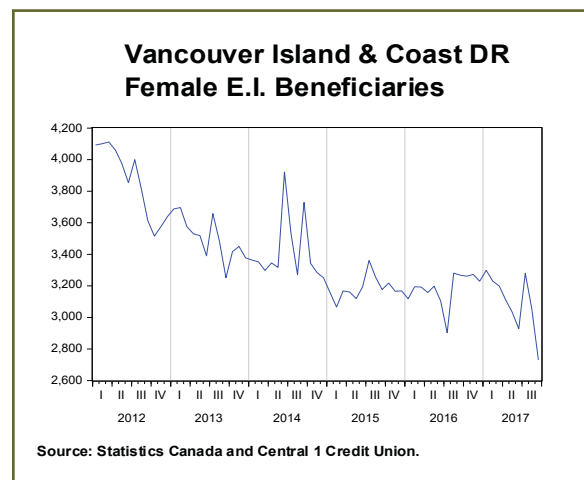
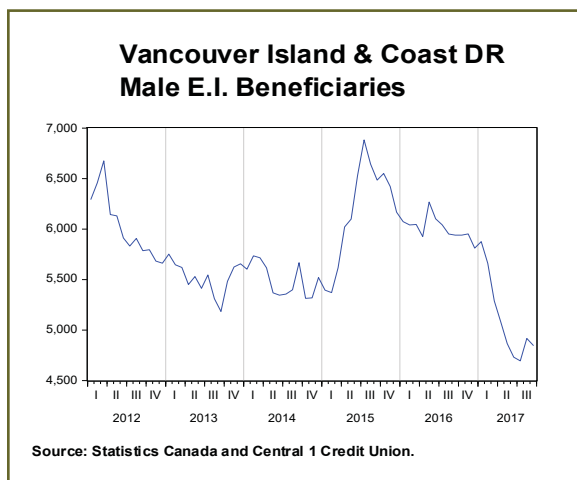
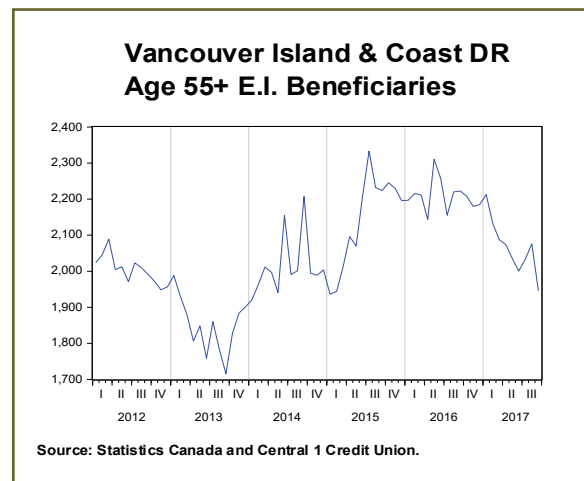
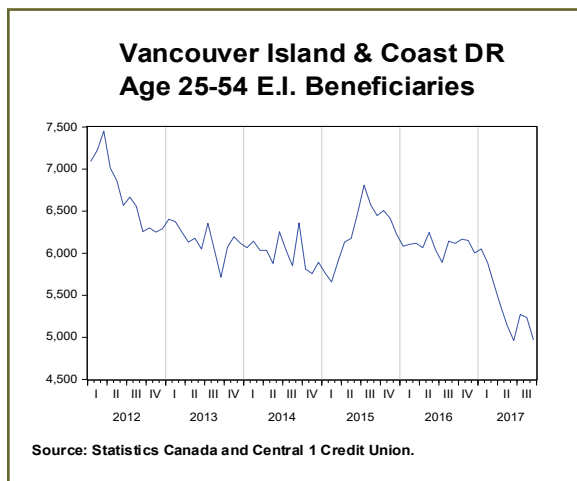
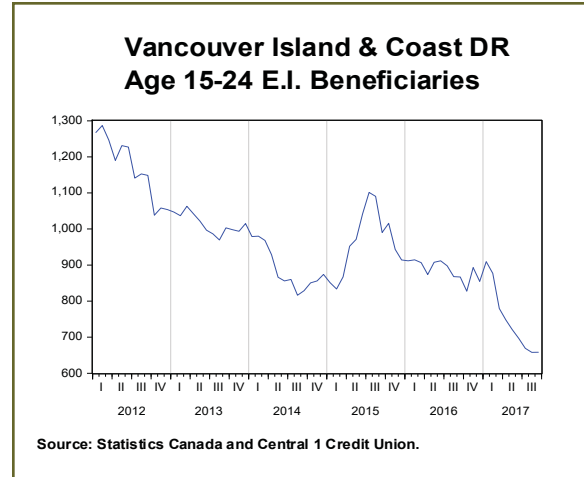
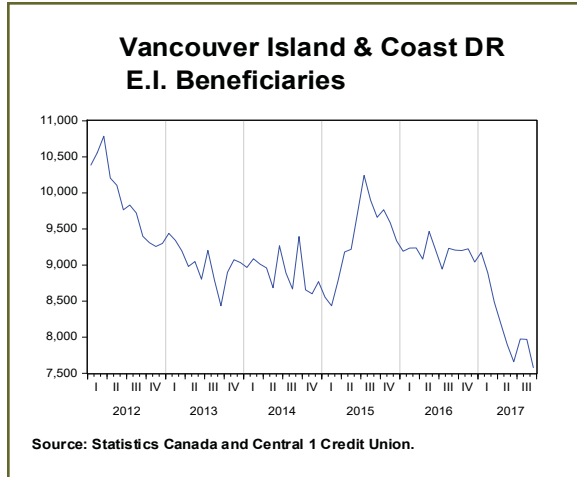
Fraser Valley RD Average Annual EI Beneficiaries						
	Total	Male	Female	15 - 24	25-54	55+
2012	4,649	2,450	2,198	438	2,989	1,221
2013	4,148	2,187	1,962	389	2,583	1,178
2014	4,171	2,163	2,009	357	2,603	1,211
2015	4,128	2,201	1,929	366	2,508	1,258
2016	3,775	2,002	1,774	324	2,304	1,148
Fraser Valley RD Average Monthly EI Beneficiaries						
	Total	Male	Female	15 - 24	25-54	55+
2016M08	3,882	1,984	1,898	337	2,362	1,184
2016M09	3,928	2,045	1,884	335	2,274	1,319
2016M10	4,009	2,070	1,939	326	2,412	1,270
2016M11	3,864	2,025	1,839	319	2,325	1,220
2016M12	3,687	1,889	1,797	279	2,251	1,157
2017M01	3,791	2,085	1,706	343	2,324	1,124
2017M02	3,638	2,033	1,605	349	2,198	1,091
2017M03	3,698	1,934	1,764	342	2,234	1,122
2017M04	3,449	1,823	1,626	296	2,059	1,095
2017M05	3,191	1,679	1,512	269	1,913	1,010
2017M06	3,077	1,632	1,445	233	1,822	1,021
2017M07	3,733	1,692	2,040	261	2,247	1,225
2017M08	3,384	1,642	1,741	238	2,044	1,102
2017M09	2,878	1,545	1,333	227	1,665	986
month-to-month % change						
2017M08	-9.3	-2.9	-14.7	-8.7	-9.0	-10.1
2017M09	-14.9	-5.9	-23.4	-4.6	-18.5	-10.5
year-to-year % change						
2017M08	-12.8	-17.2	-8.3	-29.3	-13.5	-6.9
2017M09	-26.7	-24.4	-29.2	-32.3	-26.8	-25.3
12-mth avg, y/y % change						
2017M08	-5.6	-9.0	-1.5	-11.9	-7.2	-0.2
2017M09	-6.7	-9.6	-3.3	-13.0	-8.4	-1.4

Sunshine Coast RD Average Annual EI Beneficiaries						
	Total	Male	Female	15 - 24	25-54	55+
2012	376	205	168	35	248	93
2013	307	178	129	28	201	79
2014	293	162	134	25	184	85
2015	293	185	108	28	182	85
2016	284	159	125	23	183	78
Sunshine Coast RD Average Monthly EI Beneficiaries						
	Total	Male	Female	15 - 24	25-54	55+
2016M08	284	153	131	25	176	84
2016M09	272	138	134	24	172	76
2016M10	282	155	127	26	184	72
2016M11	283	154	129	18	188	77
2016M12	254	143	110	26	158	71
2017M01	273	161	112	25	159	88
2017M02	253	146	107	25	144	84
2017M03	242	134	107	26	140	76
2017M04	244	129	115	26	144	73
2017M05	246	132	114	22	144	80
2017M06	236	121	114	28	132	76
2017M07	232	122	109	21	136	74
2017M08	256	120	137	12	160	84
2017M09	234	125	110	25	130	79
month-to-month % change						
2017M08	10.6	-2.3	25.1	-42.5	17.6	13.3
2017M09	-8.6	4.5	-19.9	103.0	-18.7	-5.6
year-to-year % change						
2017M08	-9.8	-22.1	4.7	-49.6	-8.9	0.2
2017M09	-13.8	-9.4	-18.3	3.5	-24.3	4.5
12-mth avg, y/y % change						
2017M08	-13.6	-20.5	-1.4	-6.7	-18.1	-5.1
2017M09	-14.4	-19.0	-4.8	-6.7	-19.6	-5.1

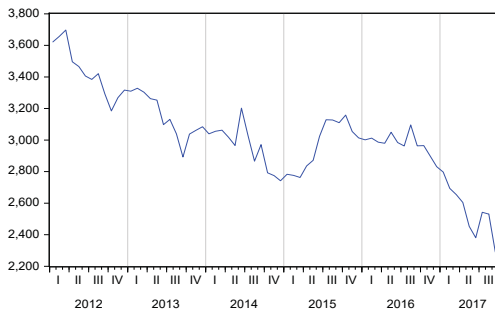
Squamish-Lillooet RD Average Annual EI Beneficiaries						
	Total	Male	Female	15 - 24	25-54	55+
2012	729	484	246	74	562	95
2013	669	438	231	68	523	80
2014	687	440	248	69	517	103
2015	650	428	220	59	491	100
2016	610	408	203	63	457	91
Squamish-Lillooet RD Average Monthly EI Beneficiaries						
	Total	Male	Female	15 - 24	25-54	55+
2016M08	621	420	201	67	466	88
2016M09	616	421	195	68	462	86
2016M10	609	410	199	63	461	85
2016M11	604	414	190	63	452	89
2016M12	589	386	203	58	445	86
2017M01	593	388	205	60	439	93
2017M02	610	401	209	61	448	101
2017M03	586	387	199	54	426	106
2017M04	537	366	171	51	401	84
2017M05	553	356	197	48	404	101
2017M06	541	350	191	43	402	96
2017M07	574	362	212	42	439	94
2017M08	529	329	200	48	387	95
2017M09	495	323	172	49	360	86
month-to-month % change						
2017M08	-7.9	-9.2	-5.6	13.0	-11.9	1.6
2017M09	-6.5	-1.7	-14.4	3.2	-7.0	-9.5
year-to-year % change						
2017M08	-14.8	-21.6	-0.4	-28.7	-17.1	8.2
2017M09	-19.7	-23.3	-11.9	-27.4	-22.2	0.4
12-mth avg, y/y % change						
2017M08	-6.6	-6.9	-7.0	-11.8	-6.5	-0.9
2017M09	-7.8	-8.5	-6.7	-14.3	-7.7	0.0

Average Annual EI Beneficiaries				
	Chilliwack CA	Abbotsford CMA	Vancouver CMA	Squamish CA
2012	1,191	3,238	24,184	333
2013	1,085	2,856	22,673	303
2014	1,133	2,833	21,554	324
2015	1,133	2,778	19,886	291
2016	1,140	2,424	17,667	261
Average Monthly EI Beneficiaries				
	Chilliwack CA	Abbotsford CMA	Vancouver CMA	Squamish CA
2016M08	1,122	2,546	17,605	267
2016M09	1,119	2,532	17,420	254
2016M10	1,118	2,594	17,248	252
2016M11	1,121	2,453	17,368	241
2016M12	1,104	2,403	17,196	232
2017M01	1,250	2,425	17,271	229
2017M02	1,150	2,341	17,394	243
2017M03	1,155	2,368	17,383	238
2017M04	1,003	2,291	17,276	222
2017M05	973	2,089	16,962	227
2017M06	930	2,209	16,696	223
2017M07	994	2,715	16,430	240
2017M08	916	2,263	16,008	209
2017M09	917	1,805	15,527	213
month-to-month % change				
2017M08	-7.8	-16.7	-2.6	-13.1
2017M09	0.0	-20.2	-3.0	1.9
year-to-year % change				
2017M08	-18.3	-11.1	-9.1	-21.8
2017M09	-18.1	-28.7	-10.9	-16.3
12-mth avg, y/y % change				
2017M08	-8.2	-3.6	-8.1	-15.4
2017M09	-9.1	-5.6	-7.9	-15.5

Section 3: Vancouver Island and Coast

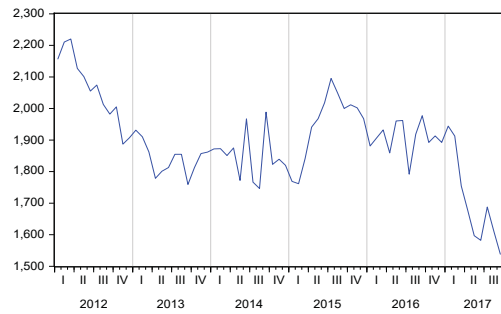


**Capital RD
E.I. Beneficiaries**



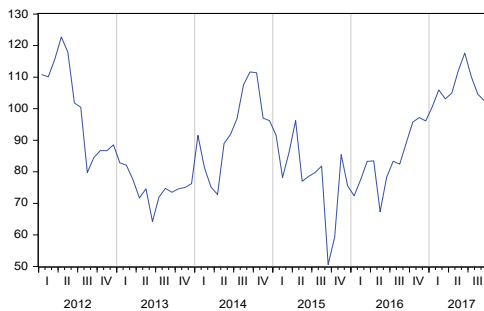
Source: Statistics Canada and Central 1 Credit Union.

**Nanaimo RD
E.I. Beneficiaries**



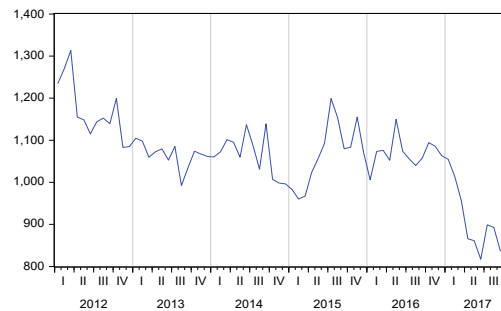
Source: Statistics Canada and Central 1 Credit Union.

**Central Coast RD
E.I. Beneficiaries**



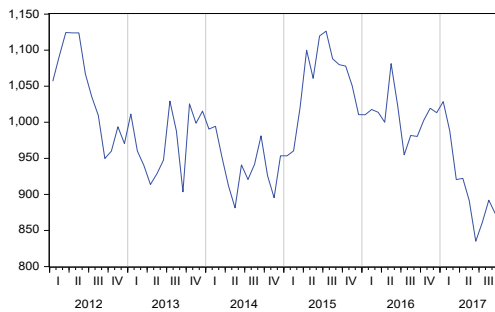
Source: Statistics Canada and Central 1 Credit Union.

**Cowichan Valley RD
E.I. Beneficiaries**



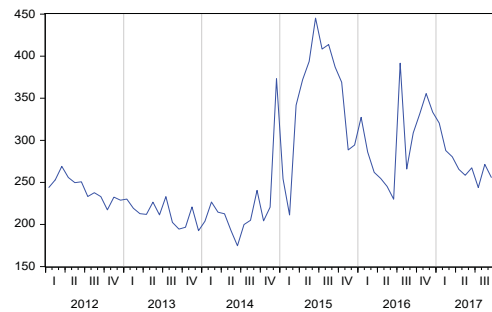
Source: Statistics Canada and Central 1 Credit Union.

**Comox Valley RD
E.I. Beneficiaries**



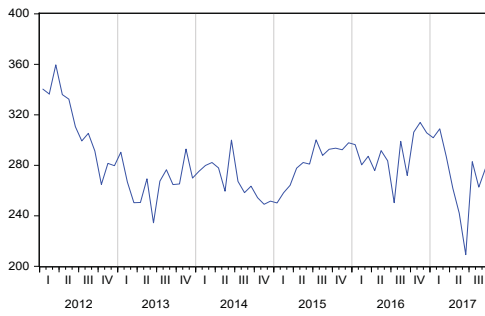
Source: Statistics Canada and Central 1 Credit Union.

**Mount Waddington RD
E.I. Beneficiaries**



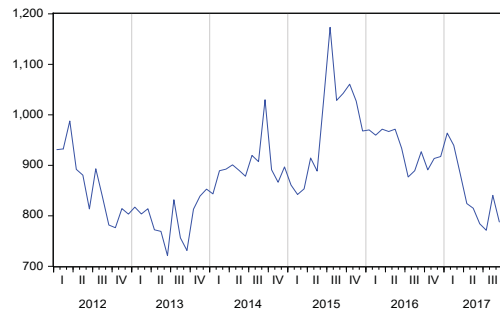
Source: Statistics Canada and Central 1 Credit Union.

Powell River RD E.I. Beneficiaries



Source: Statistics Canada and Central 1 Credit Union.

Strathcona RD E.I. Beneficiaries



Source: Statistics Canada and Central 1 Credit Union.

Vancouver Island & Coast DR Average Annual EI Beneficiaries						
	Total	Male	Female	15 - 24	25-54	55+
2012	9,948	6,073	3,875	1,180	6,766	2,013
2013	9,063	5,547	3,519	1,021	6,194	1,862
2014	8,923	5,518	3,409	902	6,024	2,013
2015	9,303	6,108	3,193	948	6,219	2,131
2016	9,177	6,004	3,175	890	6,100	2,209
Vancouver Island & Coast DR Average Monthly EI Beneficiaries						
	Total	Male	Female	15 - 24	25-54	55+
2016M08	9,232	5,951	3,281	868	6,144	2,220
2016M09	9,207	5,939	3,267	867	6,118	2,222
2016M10	9,201	5,940	3,261	827	6,166	2,208
2016M11	9,225	5,953	3,272	893	6,152	2,180
2016M12	9,041	5,812	3,229	855	6,002	2,185
2017M01	9,175	5,876	3,299	910	6,052	2,213
2017M02	8,892	5,661	3,231	877	5,882	2,133
2017M03	8,487	5,288	3,198	780	5,619	2,088
2017M04	8,187	5,078	3,109	748	5,365	2,074
2017M05	7,899	4,866	3,033	721	5,142	2,036
2017M06	7,659	4,731	2,928	697	4,962	2,001
2017M07	7,975	4,695	3,280	669	5,273	2,033
2017M08	7,971	4,917	3,054	658	5,237	2,076
2017M09	7,580	4,847	2,732	658	4,975	1,946
month-to-month % change						
2017M08	-0.1	4.7	-6.9	-1.7	-0.7	2.1
2017M09	-4.9	-1.4	-10.5	0.1	-5.0	-6.2
year-to-year % change						
2017M08	-13.7	-17.4	-6.9	-24.2	-14.8	-6.5
2017M09	-17.7	-18.4	-16.4	-24.1	-18.7	-12.4
12-mth avg, y/y % change						
2017M08	-7.6	-12.0	0.9	-12.7	-8.1	-4.1
2017M09	-8.5	-12.7	-0.5	-13.6	-9.1	-5.0

Capital RD Average Annual EI Beneficiaries						
	Total	Male	Female	15 - 24	25-54	55+
2012	3,453	2,095	1,358	411	2,440	603
2013	3,168	1,918	1,248	355	2,227	588
2014	2,968	1,813	1,157	290	2,094	587
2015	2,962	1,896	1,068	293	2,117	554
2016	2,977	1,915	1,059	287	2,075	618
Capital RD Average Monthly EI Beneficiaries						
	Total	Male	Female	15 - 24	25-54	55+
2016M08	3,096	2,000	1,096	312	2,153	631
2016M09	2,963	1,888	1,075	270	2,068	626
2016M10	2,965	1,889	1,076	266	2,107	592
2016M11	2,898	1,824	1,075	276	2,050	573
2016M12	2,831	1,767	1,064	264	1,993	575
2017M01	2,797	1,714	1,083	282	1,950	565
2017M02	2,693	1,634	1,060	255	1,882	556
2017M03	2,654	1,591	1,063	236	1,867	551
2017M04	2,604	1,523	1,081	239	1,789	577
2017M05	2,453	1,399	1,053	225	1,689	539
2017M06	2,381	1,389	992	224	1,622	534
2017M07	2,542	1,418	1,124	216	1,778	547
2017M08	2,531	1,516	1,015	199	1,755	577
2017M09	2,290	1,411	879	174	1,565	550
month-to-month % change						
2017M08	-0.4	6.9	-9.7	-7.8	-1.3	5.3
2017M09	-9.5	-6.9	-13.4	-12.4	-10.8	-4.6
year-to-year % change						
2017M08	-18.3	-24.2	-7.4	-36.2	-18.5	-8.6
2017M09	-22.7	-25.3	-18.3	-35.4	-24.3	-12.1
12-mth avg, y/y % change						
2017M08	-11.2	-17.2	0.2	-17.7	-11.3	-7.8
2017M09	-12.4	-18.5	-1.1	-18.7	-12.5	-9.4

Nanaimo RD Average Annual EI Beneficiaries						
	Total	Male	Female	15 - 24	25-54	55+
2012	2,074	1,258	815	256	1,353	466
2013	1,847	1,144	703	221	1,216	411
2014	1,853	1,142	711	195	1,213	447
2015	1,939	1,292	648	214	1,262	461
2016	1,904	1,254	649	191	1,235	479
Nanaimo RD Average Monthly EI Beneficiaries						
	Total	Male	Female	15 - 24	25-54	55+
2016M08	1,918	1,251	667	191	1,232	495
2016M09	1,977	1,298	679	201	1,287	488
2016M10	1,892	1,223	670	157	1,244	492
2016M11	1,913	1,231	682	189	1,240	484
2016M12	1,892	1,214	678	180	1,241	472
2017M01	1,944	1,234	710	208	1,265	471
2017M02	1,913	1,221	692	187	1,251	474
2017M03	1,754	1,088	666	154	1,148	452
2017M04	1,676	1,043	634	148	1,087	441
2017M05	1,597	987	610	141	1,022	434
2017M06	1,582	975	607	127	1,015	441
2017M07	1,688	1,009	678	144	1,097	447
2017M08	1,611	1,011	600	150	1,026	436
2017M09	1,538	998	540	147	994	397
month-to-month % change						
2017M08	-4.5	0.2	-11.5	4.1	-6.5	-2.5
2017M09	-4.5	-1.3	-10.0	-1.7	-3.2	-8.8
year-to-year % change						
2017M08	-16.0	-19.2	-10.0	-21.7	-16.7	-11.9
2017M09	-22.2	-23.1	-20.4	-26.8	-22.8	-18.6
12-mth avg, y/y % change						
2017M08	-7.3	-12.0	2.6	-14.8	-7.2	-4.2
2017M09	-8.7	-13.3	0.6	-16.5	-8.8	-5.4

Alberni-Clayoquet RD Average Annual EI Beneficiaries						
	Total	Male	Female	15 - 24	25-54	55+
2012	668	415	253	83	459	128
2013	648	408	241	69	461	120
2014	613	396	217	68	422	127
2015	634	415	220	68	428	141
2016	622	414	209	61	413	151
Alberni-Clayoquet RD Average Monthly EI Beneficiaries						
	Total	Male	Female	15 - 24	25-54	55+
2016M08	660	422	239	58	425	178
2016M09	632	403	229	65	407	160
2016M10	623	388	235	63	409	150
2016M11	628	405	223	62	419	147
2016M12	588	383	206	60	393	136
2017M01	664	436	228	66	447	151
2017M02	642	414	228	66	436	140
2017M03	648	412	236	54	431	163
2017M04	662	441	221	61	426	175
2017M05	669	455	214	69	403	197
2017M06	666	458	207	61	417	188
2017M07	578	359	219	56	375	147
2017M08	565	354	211	56	356	153
2017M09	618	419	200	50	423	146
month-to-month % change						
2017M08	-2.3	-1.4	-3.6	0.9	-5.2	4
2017M09	9.5	18.3	-5.3	-11.4	18.8	-4.4
year-to-year % change						
2017M08	-14.5	-16.1	-11.7	-2.9	-16.2	-14.2
2017M09	-2.2	3.9	-12.9	-23.7	3.9	-8.9
12-mth avg, y/y % change						
2017M08	0.9	-2	6	1.4	-1.2	6.1
2017M09	0.7	-1.8	4.8	0	-0.8	5

Central Coast RD Average Annual EI Beneficiaries						
	Total	Male	Female	15 - 24	25-54	55+
2012	100	62	39	9	78	15
2013	78	48	28	6	57	15
2014	93	58	36	7	71	18
2015	78	53	26	5	56	17
2016	85	58	26	8	64	18
Central Coast RD Average Monthly EI Beneficiaries						
	Total	Male	Female	15 - 24	25-54	55+
2016M08	82	57	25	na	59	16
2016M09	89	64	25	na	73	17
2016M10	96	67	29	na	73	23
2016M11	97	62	35	na	68	21
2016M12	96	61	35	na	74	22
2017M01	101	67	33	na	69	23
2017M02	106	65	41	na	73	24
2017M03	103	68	35	na	69	24
2017M04	105	67	37	na	72	26
2017M05	112	74	38	na	77	30
2017M06	118	79	38	na	68	27
2017M07	110	70	40	na	72	24
2017M08	105	69	36	na	71	25
2017M09	103	64	38	na	52	10
month-to-month % change						
2017M08	-5.1	-2.1	-10.3	na	-1.7	4.8
2017M09	-2.0	-6.3	6.3	na	-26.6	-59.8
year-to-year % change						
2017M08	26.9	20.4	41.5	na	20.9	62.4
2017M09	15.0	0.5	51.5	na	-28.1	-38.5
12-mth avg, y/y % change						
2017M08	35.9	26.6	59.3	na	27.9	45.0
2017M09	34.0	22.7	57.1	na	25.7	45.0

Cowichan Valley RD Average Annual EI Beneficiaries						
	Total	Male	Female	15 - 24	25-54	55+
2012	1,173	748	428	144	777	253
2013	1,070	658	413	120	726	229
2014	1,065	656	409	120	680	267
2015	1,063	722	340	109	691	261
2016	1,068	708	358	106	698	264

Cowichan Valley RD Average Monthly EI Beneficiaries						
	Total	Male	Female	15 - 24	25-54	55+
2016M08	1,040	673	367	95	683	262
2016M09	1,057	708	349	102	680	276
2016M10	1,094	739	356	102	708	285
2016M11	1,086	723	363	98	705	283
2016M12	1,063	699	364	93	681	290
2017M01	1,055	693	362	95	671	289
2017M02	1,014	670	344	90	651	272
2017M03	957	603	354	83	612	262
2017M04	866	576	290	77	549	241
2017M05	861	553	309	71	547	243
2017M06	817	508	310	71	507	239
2017M07	899	505	394	76	555	267
2017M08	893	522	371	69	569	254
2017M09	837	544	293	63	534	239
month-to-month % change						
2017M08	-0.7	3.3	-5.8	-9.4	2.5	-4.9
2017M09	-6.2	4.2	-20.9	-8.5	-6.2	-5.8
year-to-year % change						
2017M08	-14.1	-22.5	1.1	-26.9	-16.6	-3.1
2017M09	-20.8	-23.3	-15.9	-37.7	-21.4	-13.1
12-mth avg, y/y % change						
2017M08	-9.1	-13.1	-0.2	-21.2	-12.2	6.2
2017M09	-10.5	-14.4	-1.7	-23.5	-13.4	4.6

Comox Valley RD Average Annual EI Beneficiaries						
	Total	Male	Female	15 - 24	25-54	55+
2012	1,046	642	403	114	713	221
2013	974	602	373	105	668	202
2014	944	578	368	98	632	217
2015	1,044	674	371	107	673	264
2016	1,008	649	359	100	658	252
Comox Valley RD Average Monthly EI Beneficiaries						
	Total	Male	Female	15 - 24	25-54	55+
2016M08	982	608	374	84	652	246
2016M09	980	600	381	100	642	239
2016M10	1,003	626	377	95	674	233
2016M11	1,019	640	379	105	672	242
2016M12	1,013	633	380	107	651	255
2017M01	1,029	660	369	102	655	272
2017M02	988	635	353	101	642	246
2017M03	921	572	349	81	590	249
2017M04	922	574	348	94	587	242
2017M05	892	568	324	88	584	219
2017M06	835	519	316	78	546	211
2017M07	861	522	339	73	567	221
2017M08	892	574	318	72	589	232
2017M09	873	573	300	70	590	213
month-to-month % change						
2017M08	3.6	10.0	-6.2	-2.1	3.8	5.1
2017M09	-2.1	-0.1	-5.7	-1.6	0.1	-8.0
year-to-year % change						
2017M08	-9.1	-5.6	-14.9	-14.7	-9.7	-5.8
2017M09	-10.9	-4.4	-21.2	-29.7	-8.1	-10.7
12-mth avg, y/y % change						
2017M08	-7.1	-10.8	-0.2	-9.0	-6.2	-9.1
2017M09	-7.4	-10.1	-2.3	-9.9	-6.5	-8.9

Mount Waddington RD Average Annual EI Beneficiaries						
	Total	Male	Female	15 - 24	25-54	55+
2012	244	128	116	26	158	60
2013	214	114	100	23	140	54
2014	223	133	91	20	145	55
2015	343	232	110	33	214	96
2016	295	187	113	20	188	92
Mount Waddington RD Average Monthly EI Beneficiaries						
	Total	Male	Female	15 - 24	25-54	55+
2016M08	266	159	106	14	182	70
2016M09	309	184	124	23	194	92
2016M10	331	201	130	29	208	94
2016M11	356	228	128	31	230	94
2016M12	333	220	114	31	215	87
2017M01	320	209	112	28	204	88
2017M02	288	178	110	31	178	78
2017M03	280	167	113	24	180	77
2017M04	266	149	116	15	170	81
2017M05	258	146	113	20	158	80
2017M06	267	157	110	25	153	89
2017M07	244	139	105	14	142	87
2017M08	271	158	113	13	169	90
2017M09	256	147	109	24	149	83
month-to-month % change						
2017M08	11.3	13.5	8.3	-10.8	18.8	2.7
2017M09	-5.7	-7.1	-3.6	85.3	-11.4	-8.0
year-to-year % change						
2017M08	2.1	-0.9	6.5	-6.8	-7.1	27.6
2017M09	-17.1	-20.4	-12.2	3.2	-22.8	-10.2
12-mth avg, y/y % change						
2017M08	-0.8	-7.4	8.7	26.1	-0.5	-7.1
2017M09	-0.6	-5.8	7.0	31.8	-0.9	-7.2

Powell River RD Average Annual EI Beneficiaries						
	Total	Male	Female	15 - 24	25-54	55+
2012	313	198	116	43	204	68
2013	265	163	104	36	178	53
2014	268	166	103	26	181	62
2015	283	186	93	26	187	68
2016	285	193	94	28	183	76
Powell River RD Average Monthly EI Beneficiaries						
	Total	Male	Female	15 - 24	25-54	55+
2016M08	299	207	92	27	194	78
2016M09	272	205	67	27	170	76
2016M10	306	218	88	27	192	88
2016M11	314	228	86	36	194	83
2016M12	306	218	87	29	193	84
2017M01	302	208	94	31	190	81
2017M02	309	213	96	35	191	83
2017M03	287	192	95	32	179	76
2017M04	262	175	87	26	169	66
2017M05	242	157	85	23	148	71
2017M06	209	137	72	21	131	56
2017M07	283	177	106	23	182	77
2017M08	263	164	99	26	164	73
2017M09	277	177	100	25	170	82
month-to-month % change						
2017M08	-7.1	-7.7	-6.2	9.0	-9.9	-5.6
2017M09	5.6	8.5	0.8	-2.6	3.6	12.9
year-to-year % change						
2017M08	-12.1	-21.1	8.1	-5.9	-15.3	-6.5
2017M09	2.0	-13.5	49.3	-6.7	0.4	8.6
12-mth avg, y/y % change						
2017M08	-0.6	4.5	-10.7	6.1	-3.6	3.3
2017M09	0.6	3.2	-5.9	6.1	-2.7	4.4

Strathcona RD Average Annual EI Beneficiaries						
	Total	Male	Female	15 - 24	25-54	55+
2012	877	527	348	93	585	199
2013	799	490	310	86	523	191
2014	897	579	318	78	587	234
2015	958	639	318	94	593	269
2016	934	627	308	90	587	261
Strathcona RD Average Monthly EI Beneficiaries						
	Total	Male	Female	15 - 24	25-54	55+
2016M08	889	574	315	79	566	244
2016M09	927	589	338	79	598	250
2016M10	891	590	301	88	551	252
2016M11	914	612	302	88	574	252
2016M12	917	616	301	90	563	264
2017M01	964	656	308	89	603	273
2017M02	939	633	307	102	577	260
2017M03	882	595	288	104	544	234
2017M04	824	530	294	82	516	226
2017M05	815	528	287	78	513	223
2017M06	784	508	276	66	502	215
2017M07	771	495	276	52	503	216
2017M08	840	550	290	66	537	237
2017M09	788	515	273	64	497	226
month-to-month % change						
2017M08	9.0	11.1	5.2	24.9	6.9	9.8
2017M09	-6.3	-6.4	-6.0	-1.7	-7.5	-4.8
year-to-year % change						
2017M08	-5.5	-4.2	-7.8	-17.1	-5.0	-2.8
2017M09	-15.0	-12.6	-19.2	-18.5	-16.9	-9.5
12-mth avg, y/y % change						
2017M08	-9.1	-11.5	-4.0	-9.7	-8.2	-10.1
2017M09	-9.4	-11.1	-5.9	-9.0	-9.2	-9.9

Vancouver Island & Coast DR CMA/CAs Average Annual EI Beneficiaries

	Victoria CMA	Duncan CA	Nanaimo CA	Parksville CA	Port Alberni CA	Courtenay CA	Campbell River CA	Powell River CA
2012	3,283	627	1,462	315	480	893	703	263
2013	3,035	573	1,308	282	462	834	647	226
2014	2,829	572	1,297	275	430	802	717	228
2015	2,833	562	1,338	305	468	879	782	235
2016	2,824	576	1,304	303	482	851	761	235

Average Monthly EI Beneficiaries

	Victoria CMA	Duncan CA	Nanaimo CA	Parksville CA	Port Alberni CA	Courtenay CA	Campbell River CA	Powell River CA
2016M08	2,818	570	1,320	307	468	833	725	235
2016M09	2,798	582	1,306	318	481	833	736	225
2016M10	2,782	575	1,306	299	467	834	709	234
2016M11	2,760	579	1,301	301	507	843	715	249
2016M12	2,708	579	1,303	296	476	842	735	250
2017M01	2,583	573	1,322	288	508	845	759	246
2017M02	2,534	557	1,321	285	500	815	749	250
2017M03	2,503	541	1,242	267	530	771	725	243
2017M04	2,443	513	1,199	253	522	767	701	234
2017M05	2,375	501	1,121	259	520	759	687	200
2017M06	2,287	471	1,085	248	503	727	678	190
2017M07	2,436	500	1,164	266	465	739	651	243
2017M08	2,349	509	1,101	258	409	735	695	236
2017M09	2,202	490	1,075	247	480	762	665	255

month-to-month % change

2017M08	-3.6	1.8	-5.4	-3.1	-11.9	-0.6	6.7	-2.6
2017M09	-6.3	-3.8	-2.4	-4.0	17.3	3.6	-4.3	8.0

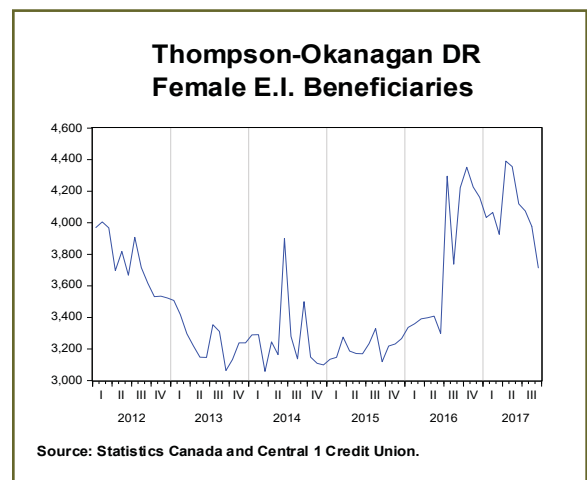
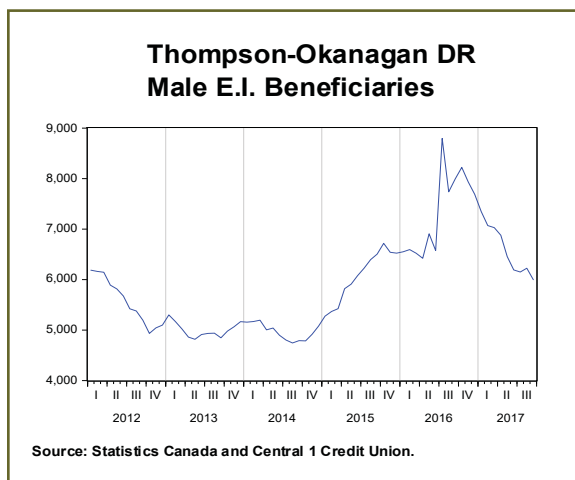
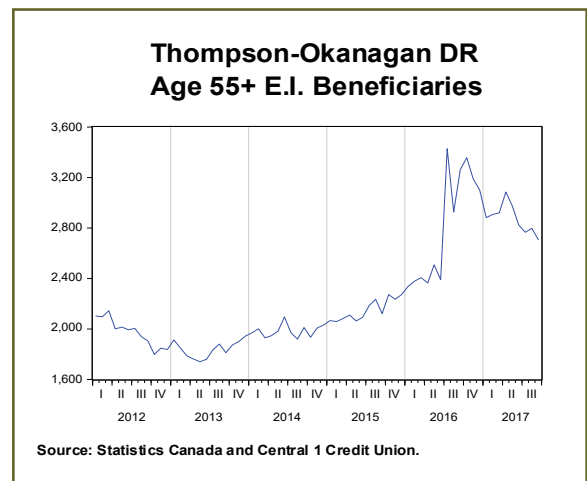
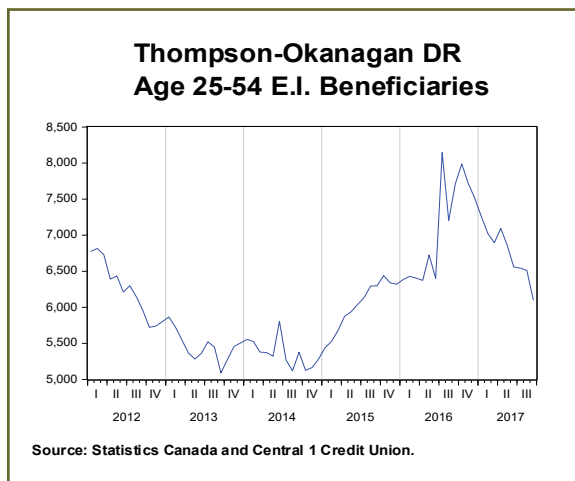
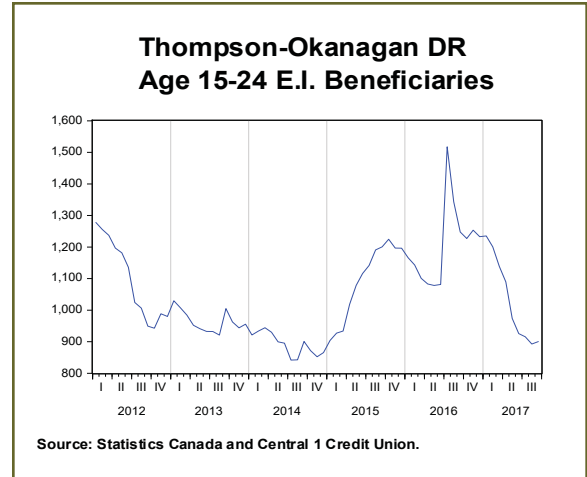
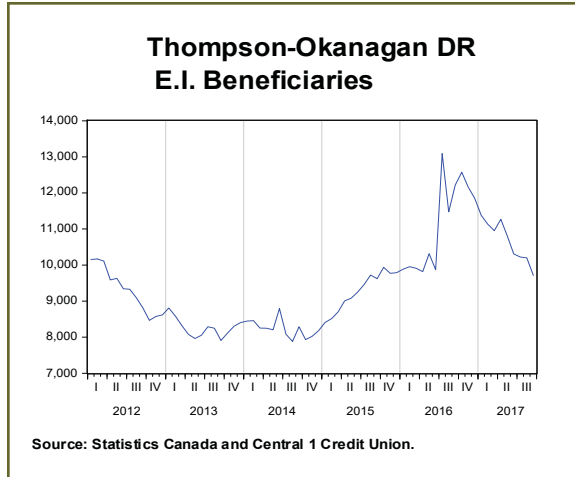
year-to-year % change

2017M08	-16.6	-10.7	-16.6	-16.1	-12.6	-11.8	-4.1	0.5
2017M09	-21.3	-15.9	-17.7	-22.2	-0.2	-8.6	-9.7	13.6

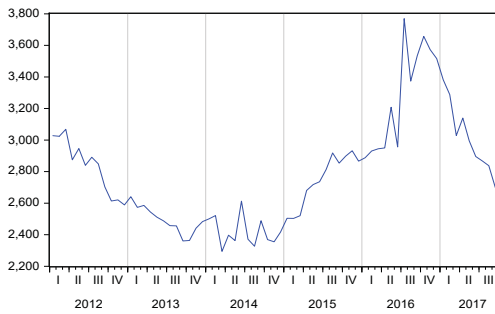
12-mth avg, y/y % change

2017M08	-12.1	-6.8	-7.0	-9.2	4.4	-8.1	-11.0	-3.1
2017M09	-13.6	-8.2	-8.4	-11.4	4.1	-8.3	-10.8	-1.4

Section 4: Thompson-Okanagan

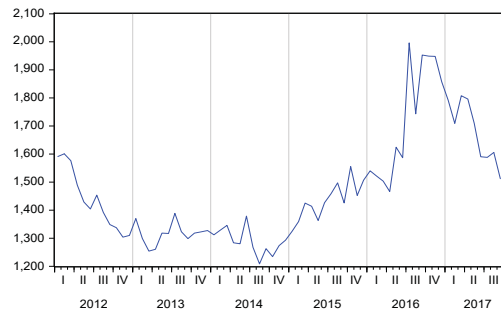


**Central Okanagan RD
E.I. Beneficiaries**



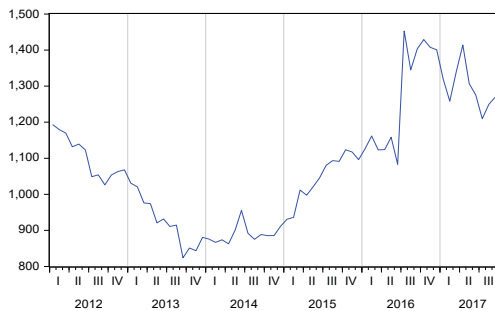
Source: Statistics Canada and Central 1 Credit Union.

**North Okanagan RD
E.I. Beneficiaries**



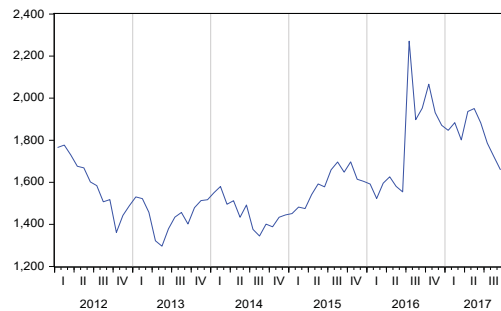
Source: Statistics Canada and Central 1 Credit Union.

**Columbia Shuswap RD
E.I. Beneficiaries**



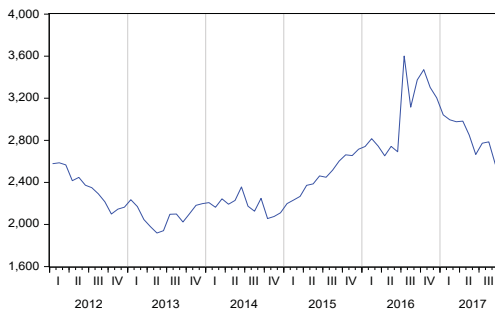
Source: Statistics Canada and Central 1 Credit Union.

**Okanagan Similkameen RD
E.I. Beneficiaries**



Source: Statistics Canada and Central 1 Credit Union.

**Thompson-Nicola RD
E.I. Beneficiaries**



Source: Statistics Canada and Central 1 Credit Union.

Thompson-Okanagan DR Average Annual EI Beneficiaries						
	Total	Male	Female	15 - 24	25-54	55+
2012	9,443	5,676	3,767	1,130	6,324	1,995
2013	8,314	5,034	3,280	973	5,496	1,845
2014	8,271	5,016	3,258	901	5,387	1,988
2015	9,184	5,969	3,216	1,067	5,977	2,145
2016	10,948	7,196	3,757	1,187	7,006	2,760
Thompson-Okanagan DR Average Monthly EI Beneficiaries						
	Total	Male	Female	15 - 24	25-54	55+
2016M08	11,474	7,737	3,737	1,344	7,205	2,925
2016M09	12,216	7,994	4,222	1,247	7,707	3,262
2016M10	12,573	8,221	4,352	1,227	7,989	3,357
2016M11	12,163	7,936	4,227	1,254	7,719	3,190
2016M12	11,850	7,689	4,160	1,233	7,516	3,101
2017M01	11,380	7,346	4,034	1,235	7,263	2,882
2017M02	11,134	7,069	4,065	1,201	7,026	2,908
2017M03	10,955	7,028	3,926	1,139	6,896	2,920
2017M04	11,269	6,878	4,390	1,090	7,094	3,085
2017M05	10,811	6,455	4,355	974	6,860	2,977
2017M06	10,309	6,189	4,119	925	6,561	2,823
2017M07	10,224	6,150	4,075	915	6,543	2,765
2017M08	10,200	6,223	3,977	893	6,510	2,797
2017M09	9,712	5,998	3,715	900	6,104	2,708
month-to-month % change						
2017M08	-0.2	1.2	-2.4	-2.5	-0.5	1.2
2017M09	-4.8	-3.6	-6.6	0.9	-6.2	-3.2
year-to-year % change						
2017M08	-11.1	-19.6	6.4	-33.6	-9.6	-4.4
2017M09	-20.5	-25.0	-12.0	-27.8	-20.8	-17.0
12-mth avg, y/y % change						
2017M08	9.7	4.5	20.1	-4.2	7.9	21.4
2017M09	6.6	1.5	16.7	-6.1	5.0	16.7

Central Okanagan RD Average Annual EI Beneficiaries						
	Total	Male	Female	15 - 24	25-54	55+
2012	2,865	1,738	1,127	356	1,957	554
2013	2,508	1,499	1,009	312	1,661	536
2014	2,424	1,438	987	269	1,621	534
2015	2,721	1,760	960	314	1,830	577
2016	3,238	2,119	1,119	363	2,125	751
Central Okanagan RD Average Monthly EI Beneficiaries						
	Total	Male	Female	15 - 24	25-54	55+
2016M08	3,373	2,259	1,115	385	2,196	792
2016M09	3,534	2,288	1,246	380	2,292	862
2016M10	3,656	2,350	1,306	390	2,347	919
2016M11	3,573	2,344	1,229	392	2,276	904
2016M12	3,516	2,296	1,220	392	2,238	886
2017M01	3,381	2,189	1,192	380	2,184	817
2017M02	3,288	2,108	1,181	377	2,091	820
2017M03	3,028	2,043	985	339	1,918	772
2017M04	3,139	1,929	1,210	321	2,024	795
2017M05	2,995	1,803	1,192	295	1,931	770
2017M06	2,896	1,760	1,136	280	1,855	761
2017M07	2,868	1,737	1,131	280	1,863	725
2017M08	2,837	1,698	1,140	275	1,832	730
2017M09	2,698	1,665	1,034	272	1,710	716
month-to-month % change						
2017M08	-1.1	-2.3	0.8	-1.7	-1.6	0.7
2017M09	-4.9	-1.9	-9.3	-1.1	-6.7	-1.9
year-to-year % change						
2017M08	-15.9	-24.8	2.2	-28.5	-16.6	-7.9
2017M09	-23.6	-27.2	-17.0	-28.2	-25.4	-16.9
12-mth avg, y/y % change						
2017M08	6.1	2.5	13.2	-1.7	2.2	22.5
2017M09	3.0	-0.4	9.6	-3.8	-0.7	17.8

North Okanagan RD Average Annual EI Beneficiaries						
	Total	Male	Female	15 - 24	25-54	55+
2012	1,457	914	543	184	948	327
2013	1,317	820	498	171	841	305
2014	1,295	793	501	153	809	335
2015	1,424	948	477	172	891	362
2016	1,700	1,135	566	179	1,057	465

North Okanagan RD Average Monthly EI Beneficiaries						
	Total	Male	Female	15 - 24	25-54	55+
2016M08	1,743	1,187	557	191	1,043	509
2016M09	1,953	1,296	657	185	1,213	556
2016M10	1,949	1,295	654	162	1,242	545
2016M11	1,948	1,296	653	191	1,228	530
2016M12	1,858	1,223	635	187	1,165	505
2017M01	1,791	1,176	615	192	1,116	484
2017M02	1,709	1,099	610	190	1,043	476
2017M03	1,808	1,157	651	185	1,129	494
2017M04	1,796	1,126	671	174	1,141	481
2017M05	1,709	1,039	671	160	1,058	491
2017M06	1,590	956	634	148	995	447
2017M07	1,588	978	610	149	988	451
2017M08	1,605	1,003	602	129	1,016	461
2017M09	1,512	965	548	122	972	418
month-to-month % change						
2017M08	1.1	2.6	-1.3	-13.4	2.8	2.2
2017M09	-5.8	-3.9	-9.0	-5.3	-4.3	-9.2
year-to-year % change						
2017M08	-7.9	-15.4	8.1	-32.5	-2.6	-9.6
2017M09	-22.6	-25.6	-16.7	-33.8	-19.9	-24.7
12-mth avg, y/y % change						
2017M08	12.5	6.8	24.5	-4.1	13.6	17.8
2017M09	8.5	3.2	19.5	-6.0	9.9	12.2

Okanagan Similkameen RD Average Annual EI Beneficiaries						
	Total	Male	Female	15 - 24	25-54	55+
2012	1,623	913	709	165	1,058	401
2013	1,457	840	618	135	947	376
2014	1,477	857	621	123	929	426
2015	1,570	976	596	146	993	433
2016	1,758	1,076	684	139	1,088	533
Okanagan Similkameen RD Average Monthly EI Beneficiaries						
	Total	Male	Female	15 - 24	25-54	55+
2016M08	1,898	1,159	739	140	1,153	605
2016M09	1,952	1,184	768	135	1,185	632
2016M10	2,067	1,278	788	145	1,282	640
2016M11	1,931	1,168	764	155	1,175	601
2016M12	1,871	1,125	746	151	1,151	569
2017M01	1,847	1,108	739	149	1,136	562
2017M02	1,884	1,114	769	149	1,146	588
2017M03	1,801	1,070	731	142	1,093	567
2017M04	1,936	1,072	865	139	1,152	645
2017M05	1,950	1,050	901	116	1,186	648
2017M06	1,882	1,017	865	122	1,145	615
2017M07	1,786	975	811	127	1,074	585
2017M08	1,723	963	760	122	1,039	561
2017M09	1,660	938	723	132	968	560
month-to-month % change						
2017M08	-3.6	-1.3	-6.3	-3.8	-3.3	-4.1
2017M09	-3.6	-2.6	-4.9	8.4	-6.9	-0.2
year-to-year % change						
2017M08	-9.2	-16.9	2.8	-12.7	-9.9	-7.1
2017M09	-14.9	-20.8	-5.9	-2.1	-18.3	-11.3
12-mth avg, y/y % change						
2017M08	13.6	6.7	24.4	-0.6	10.2	25.0
2017M09	11.4	4.6	21.9	0.6	8.2	21.1

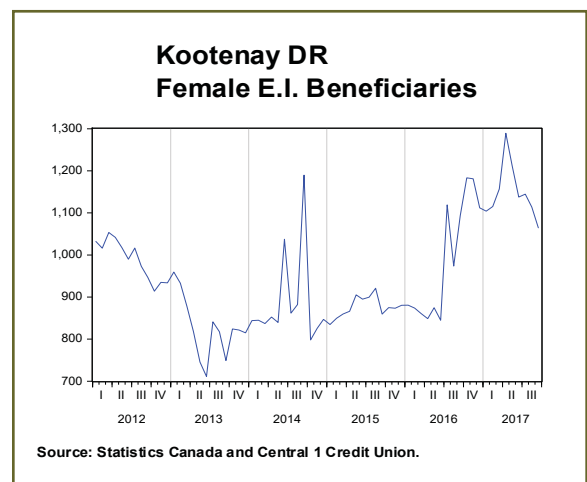
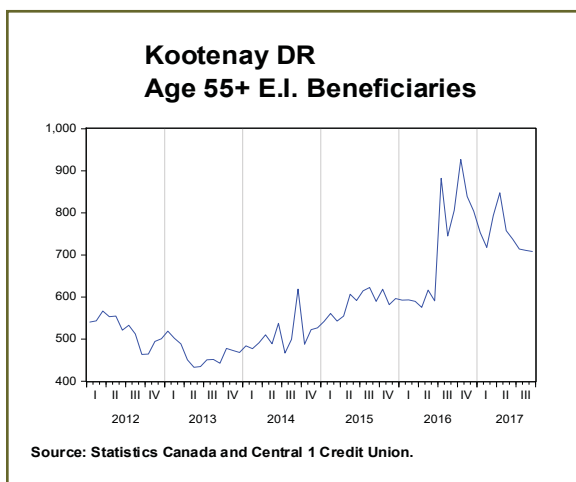
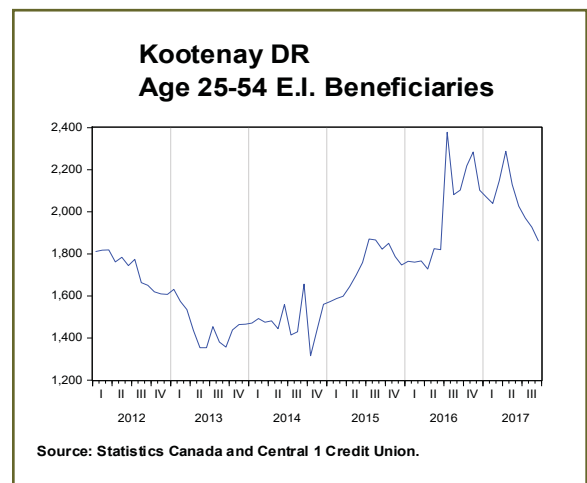
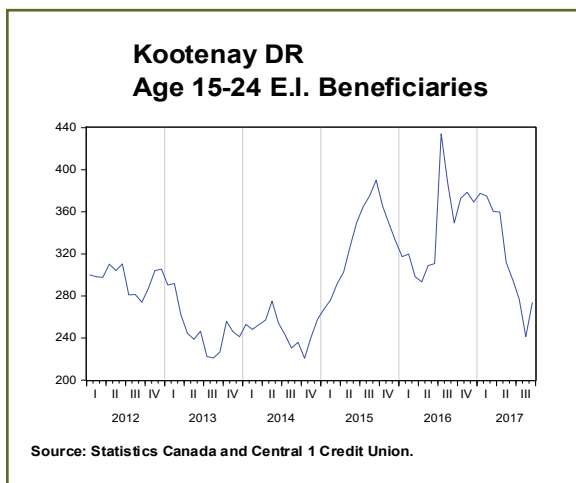
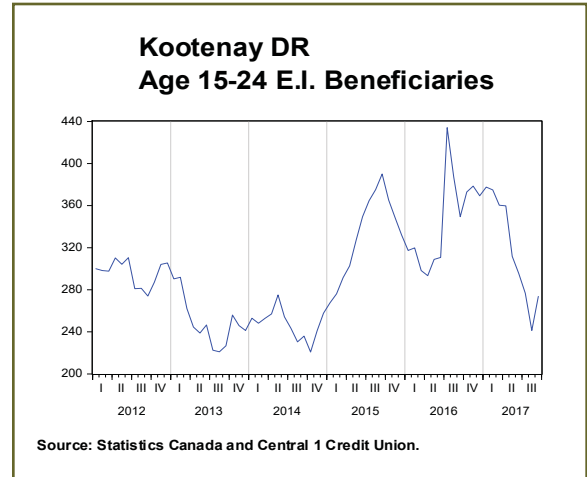
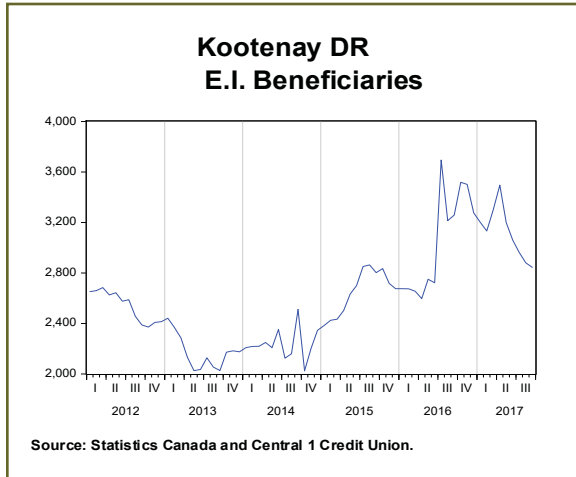
Columbia Shuswap RD Average Annual EI Beneficiaries						
	Total	Male	Female	15 - 24	25-54	55+
2012	1,118	668	449	122	774	224
2013	939	560	378	103	649	188
2014	886	535	354	98	586	203
2015	1,035	671	363	118	677	242
2016	1,253	817	438	128	808	319
Columbia Shuswap RD Average Monthly EI Beneficiaries						
	Total	Male	Female	15 - 24	25-54	55+
2016M08	1,345	905	440	150	859	335
2016M09	1,403	931	472	130	887	385
2016M10	1,429	921	508	126	924	379
2016M11	1,408	919	489	125	919	364
2016M12	1,401	899	501	125	902	373
2017M01	1,319	842	477	146	845	328
2017M02	1,258	785	473	141	803	314
2017M03	1,340	829	511	142	850	348
2017M04	1,414	848	566	150	872	392
2017M05	1,307	794	513	118	830	358
2017M06	1,276	780	495	120	825	331
2017M07	1,210	712	497	98	787	325
2017M08	1,250	756	493	97	814	338
2017M09	1,270	787	483	129	820	321
month-to-month % change						
2017M08	3.3	6.2	-0.8	-0.5	3.5	4.0
2017M09	1.6	4.0	-2.1	32.5	0.7	-5.0
year-to-year % change						
2017M08	-7.1	-16.4	12.0	-35.4	-5.3	0.9
2017M09	-9.5	-15.5	2.4	-1.3	-7.6	-16.6
12-mth avg, y/y % change						
2017M08	14.5	8.8	26.4	-1.3	13.6	23.5
2017M09	12.1	6.2	24.5	-1.3	11.5	19.2

Thompson-Nicola RD Average Annual EI Beneficiaries						
	Total	Male	Female	15 - 24	25-54	55+
2012	2,380	1,442	938	303	1,588	489
2013	2,093	1,315	778	253	1,398	441
2014	2,189	1,393	795	258	1,442	490
2015	2,434	1,615	820	317	1,587	532
2016	2,999	2,049	950	378	1,928	693

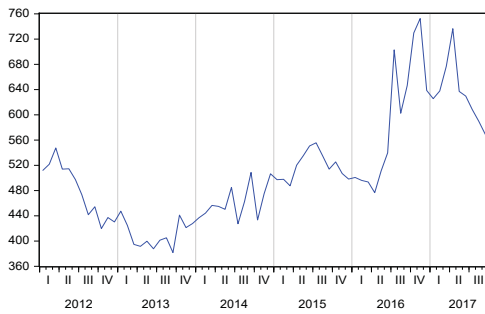
Thompson-Nicola RD Average Monthly EI Beneficiaries						
	Total	Male	Female	15 - 24	25-54	55+
2016M08	3,115	2,228	886	478	1,953	684
2016M09	3,374	2,295	1,079	418	2,130	827
2016M10	3,472	2,376	1,095	404	2,195	874
2016M11	3,303	2,210	1,093	390	2,121	791
2016M12	3,204	2,146	1,058	377	2,059	767
2017M01	3,041	2,031	1,010	369	1,982	691
2017M02	2,996	1,964	1,032	344	1,942	709
2017M03	2,977	1,929	1,048	332	1,905	740
2017M04	2,982	1,903	1,079	306	1,904	772
2017M05	2,849	1,770	1,079	285	1,855	709
2017M06	2,665	1,676	990	256	1,740	669
2017M07	2,773	1,747	1,025	262	1,831	679
2017M08	2,785	1,803	982	269	1,809	707
2017M09	2,571	1,644	928	245	1,635	692
month-to-month % change						
2017M08	0.5	3.2	-4.2	2.8	-1.2	4.1
2017M09	-7.7	-8.8	-5.5	-9.1	-9.6	-2.2
year-to-year % change						
2017M08	-10.6	-19.1	10.8	-43.6	-7.4	3.4
2017M09	-23.8	-28.4	-14.0	-41.4	-23.2	-16.4
12-mth avg, y/y % change						
2017M08	7.7	2.3	19.7	-9.2	7.4	18.8
2017M09	4.3	-1.1	16.1	-12.5	4.2	14.2

Thompson-Okanagan DR CMA/CAs Average Annual EI Beneficiaries					
	Penticton CA	Kelowna CMA	Vernon CA	Salmon Arm CA	Kamloops CA
2012	749	2,867	988	318	1,638
2013	692	2,508	894	259	1,432
2014	704	2,423	881	266	1,522
2015	774	2,721	970	292	1,748
2016	869	3,232	1,143	358	2,138
Average Monthly EI Beneficiaries					
	Penticton CA	Kelowna CMA	Vernon CA	Salmon Arm CA	Kamloops CA
2016M08	899	3,199	1,144	326	2,210
2016M09	958	3,457	1,295	373	2,380
2016M10	1,045	3,680	1,278	388	2,393
2016M11	972	3,561	1,359	400	2,333
2016M12	899	3,516	1,269	402	2,246
2017M01	832	3,294	1,156	349	2,029
2017M02	859	3,236	1,144	348	2,022
2017M03	860	3,159	1,191	383	2,039
2017M04	863	3,062	1,189	387	1,992
2017M05	887	3,015	1,142	380	1,958
2017M06	852	3,033	1,121	366	1,892
2017M07	800	2,921	1,082	350	1,912
2017M08	770	2,807	1,064	354	1,866
2017M09	735	2,713	1,030	352	1,716
month-to-month % change					
2017M08	-3.8	-3.9	-1.7	1.1	-2.4
2017M09	-4.5	-3.3	-3.2	-0.5	-8.0
year-to-year % change					
2017M08	-14.4	-12.3	-7.0	8.8	-15.5
2017M09	-23.2	-21.5	-20.5	-5.6	-27.9
12-mth avg, y/y % change					
2017M08	9.8	7.9	14.6	13.4	5.3
2017M09	5.5	3.7	9.4	10.9	0.0

Section 5: Kootenay

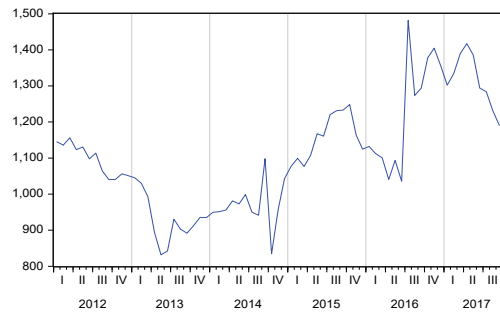


Kootenay Boundary RD E.I. Beneficiaries



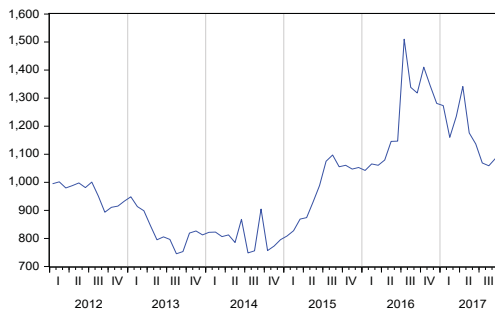
Source: Statistics Canada and Central 1 Credit Union.

Kootenay Central RD E.I. Beneficiaries



Source: Statistics Canada and Central 1 Credit Union.

East Kootenay RD E.I. Beneficiaries



Source: Statistics Canada and Central 1 Credit Union.

Kootenay DR Average Annual EI Beneficiaries						
	Total	Male	Female	15 - 24	25-54	55+
2012	2,559	1,567	992	299	1,735	527
2013	2,200	1,363	837	255	1,471	472
2014	2,245	1,363	881	251	1,488	510
2015	2,617	1,741	878	322	1,719	583
2016	3,006	2,013	993	338	1,966	702

Kootenay DR Average Monthly EI Beneficiaries						
	Total	Male	Female	15 - 24	25-54	55+
2016M08	3,214	2,240	974	387	2,082	745
2016M09	3,259	2,165	1,093	349	2,103	806
2016M10	3,518	2,335	1,183	373	2,218	927
2016M11	3,502	2,321	1,181	379	2,284	839
2016M12	3,276	2,164	1,112	369	2,102	804
2017M01	3,201	2,097	1,104	378	2,071	753
2017M02	3,133	2,017	1,115	375	2,040	718
2017M03	3,302	2,145	1,157	360	2,148	794
2017M04	3,495	2,206	1,289	360	2,288	848
2017M05	3,199	1,988	1,211	312	2,129	758
2017M06	3,060	1,922	1,138	295	2,027	738
2017M07	2,961	1,817	1,145	277	1,970	714
2017M08	2,880	1,766	1,114	241	1,928	711
2017M09	2,844	1,780	1,064	274	1,862	708

month-to-month % change						
2017M08	-2.7	-2.8	-2.7	-12.8	-2.2	-0.4
2017M09	-1.2	0.8	-4.4	13.4	-3.4	-0.4

year-to-year % change						
2017M08	-10.4	-21.2	14.4	-37.7	-7.4	-4.5
2017M09	-12.7	-17.8	-2.7	-21.7	-11.5	-12.1

12-mth avg, y/y % change						
2017M08	15.1	9.5	26.8	4.0	14.1	24.7
2017M09	13.1	7.6	24.4	3.3	12.1	21.1

Kootenay Boundary RD Average Annual EI Beneficiaries						
	Total	Male	Female	15 - 24	25-54	55+
2012	485	298	188	56	322	110
2013	414	258	157	51	260	102
2014	460	278	183	54	292	114
2015	515	352	164	61	323	132
2016	579	385	195	62	374	143

Kootenay Boundary RD Average Monthly EI Beneficiaries						
	Total	Male	Female	15 - 24	25-54	55+
2016M08	602	414	188	78	389	135
2016M09	646	438	209	72	404	170
2016M10	730	500	230	73	445	211
2016M11	752	503	249	77	488	188
2016M12	638	424	214	76	384	178
2017M01	626	413	212	81	373	172
2017M02	638	418	220	92	383	163
2017M03	677	445	232	85	409	183
2017M04	736	470	267	85	478	174
2017M05	637	407	230	70	395	173
2017M06	630	396	233	71	393	166
2017M07	608	384	225	64	388	156
2017M08	590	363	227	50	383	156
2017M09	569	348	221	57	367	145

month-to-month % change						
2017M08	-3.1	-5.3	0.9	-21.5	-1.2	-0.2
2017M09	-3.5	-4.1	-2.5	13.0	-4.3	-6.9

year-to-year % change						
2017M08	-2.1	-12.4	20.4	-35.8	-1.4	15.3
2017M09	-12.0	-20.5	5.8	-20.4	-9.3	-14.8

12-mth avg, y/y % change						
2017M08	24.9	22.6	29.4	33.3	19.5	40.3
2017M09	21.8	19.5	27.4	31.9	16.7	35.3

Kootenay Central RD Average Annual EI Beneficiaries						
	Total	Male	Female	15 - 24	25-54	55+
2012	1,107	707	399	130	757	219
2013	940	607	333	109	643	187
2014	972	619	353	106	663	205
2015	1,148	783	365	137	783	231
2016	1,217	816	402	138	818	261

Kootenay Central RD Average Monthly EI Beneficiaries						
	Total	Male	Female	15 - 24	25-54	55+
2016M08	1,273	877	396	160	852	262
2016M09	1,294	846	448	145	864	285
2016M10	1,378	920	458	152	882	344
2016M11	1,405	921	484	160	942	303
2016M12	1,356	895	461	147	920	289
2017M01	1,302	858	444	141	892	269
2017M02	1,334	874	460	143	911	280
2017M03	1,390	909	481	140	948	302
2017M04	1,417	903	515	142	965	310
2017M05	1,386	858	528	135	943	308
2017M06	1,294	824	470	128	879	286
2017M07	1,284	787	497	127	862	295
2017M08	1,231	771	461	114	824	294
2017M09	1,191	768	422	117	787	286

month-to-month % change						
2017M08	-4.1	-2.1	-7.3	-10.6	-4.4	-0.4
2017M09	-3.3	-0.3	-8.4	3.1	-4.4	-2.6

year-to-year % change						
2017M08	-3.3	-12.1	16.2	-28.9	-3.3	12.3
2017M09	-8.0	-9.2	-5.7	-19.1	-8.8	0.3

12-mth avg, y/y % change						
2017M08	15.5	9.5	28.8	2.4	15.6	22.0
2017M09	14.6	9.0	26.3	1.2	14.8	20.3

East Kootenay RD Average Annual EI Beneficiaries

	Total	Male	Female	15 - 24	25-54	55+
2012	968	563	405	113	657	198
2013	846	499	347	95	568	183
2014	813	466	345	91	533	191
2015	954	607	349	124	613	220
2016	1,210	813	397	138	773	298

East Kootenay RD Average Monthly EI Beneficiaries

	Total	Male	Female	15 - 24	25-54	55+
2016M08	1,338	949	389	149	841	348
2016M09	1,318	881	437	133	835	350
2016M10	1,411	915	496	147	892	371
2016M11	1,345	897	448	142	855	348
2016M12	1,281	845	436	147	798	336
2017M01	1,274	826	448	156	805	312
2017M02	1,160	725	435	141	746	274
2017M03	1,235	791	444	135	792	308
2017M04	1,342	834	508	133	845	364
2017M05	1,176	723	453	107	792	277
2017M06	1,137	702	435	96	755	286
2017M07	1,069	646	423	85	721	263
2017M08	1,059	633	426	77	720	261
2017M09	1,084	663	421	100	708	277

month-to-month % change

2017M08	-0.9	-2.1	0.9	-9.6	0.0	-0.7
2017M09	2.4	4.8	-1.2	28.9	-1.8	6.1

year-to-year % change

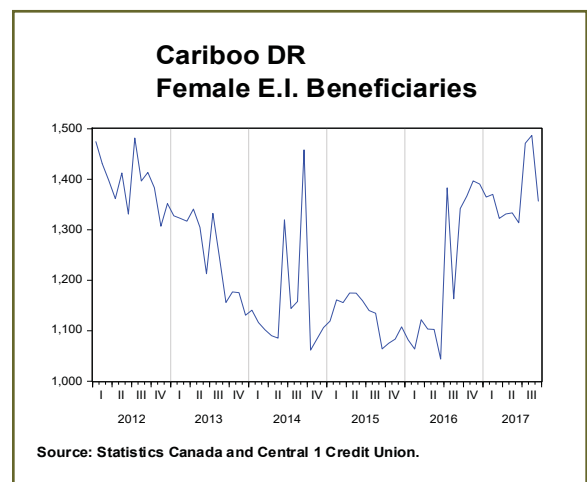
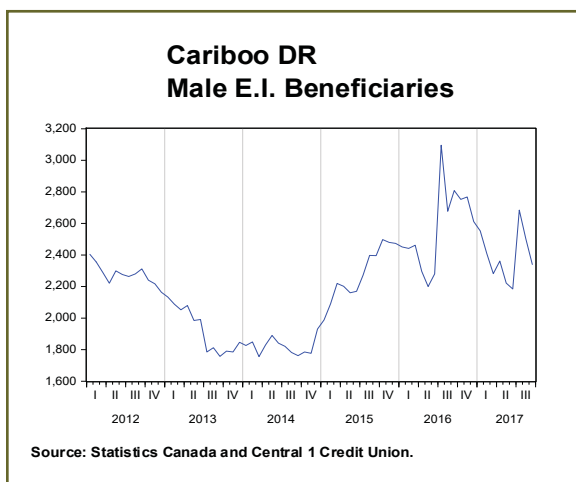
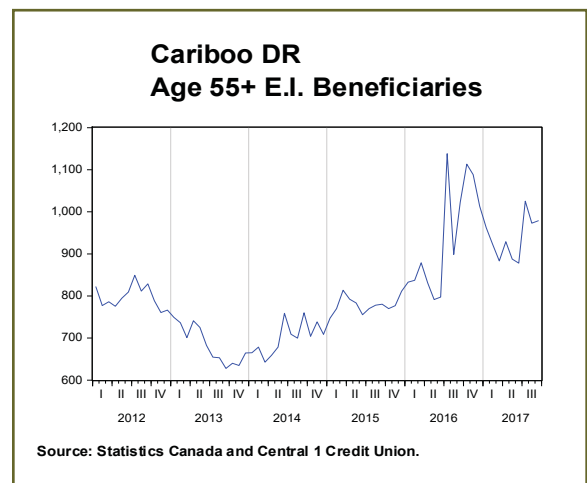
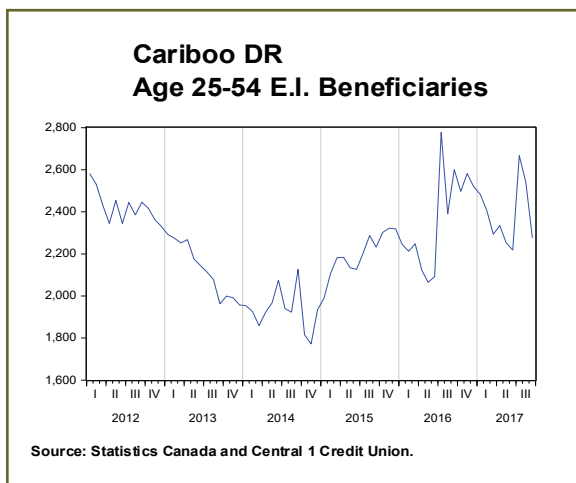
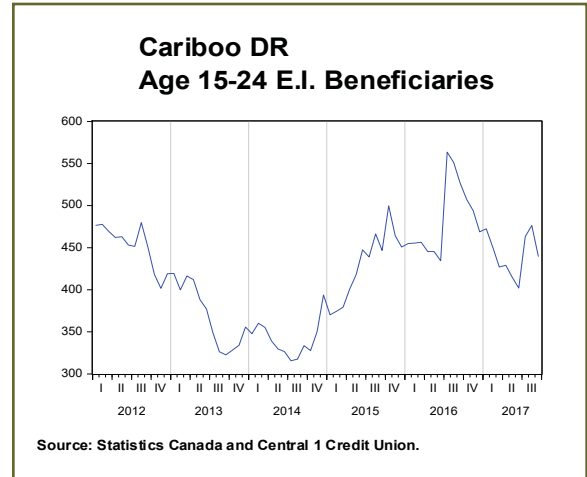
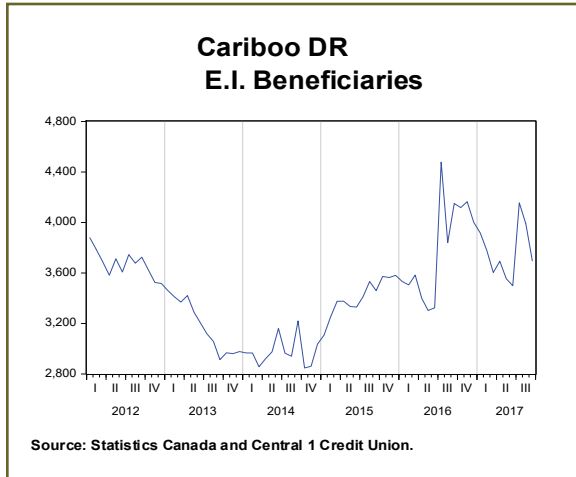
2017M08	-20.9	-33.4	9.6	-48.1	-14.4	-25.0
2017M09	-17.7	-24.8	-3.6	-25.2	-15.2	-20.9

12-mth avg, y/y % change

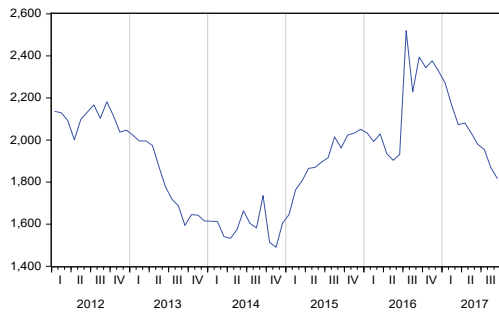
2017M08	10.1	3.6	23.5	-6.6	9.8	19.9
2017M09	7.4	0.8	21.0	-6.7	7.1	15.0

Kootenay DR CAs Average Annual EI Beneficiaries	
	Cranbrook CA
2012	382
2013	368
2014	329
2015	388
2016	493
Average Monthly EI Beneficiaries	
	Cranbrook CA
2016M08	523
2016M09	531
2016M10	601
2016M11	566
2016M12	559
2017M01	530
2017M02	526
2017M03	535
2017M04	543
2017M05	503
2017M06	468
2017M07	435
2017M08	424
2017M09	416
month-to-month % change	
2017M08	-2.5
2017M09	-1.9
year-to-year % change	
2017M08	-18.9
2017M09	-21.7
12-mth avg, y/y % change	
2017M08	17.6
2017M09	12.3

Section 6: Cariboo

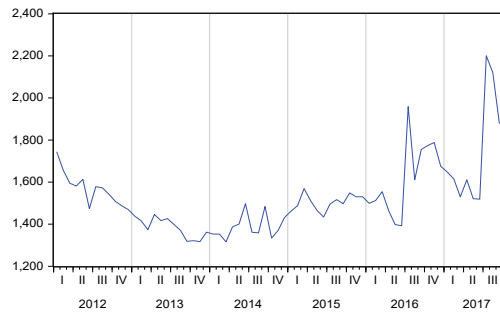


Fraser Fort George RD E.I. Beneficiaries



Source: Statistics Canada and Central 1 Credit Union.

Cariboo RD E.I. Beneficiaries



Source: Statistics Canada and Central 1 Credit Union.

Cariboo DR Average Annual EI Beneficiaries						
	Total	Male	Female	15 - 24	25-54	55+
2012	3,678	2,280	1,401	453	2,428	798
2013	3,210	1,953	1,258	378	2,146	690
2014	2,979	1,829	1,154	345	1,940	699
2015	3,388	2,257	1,132	422	2,187	778
2016	3,753	2,533	1,217	477	2,348	927

Cariboo DR Average Monthly EI Beneficiaries						
	Total	Male	Female	15 - 24	25-54	55+
2016M08	3,840	2,677	1,163	551	2,390	899
2016M09	4,150	2,808	1,342	526	2,601	1,023
2016M10	4,118	2,752	1,366	507	2,498	1,113
2016M11	4,164	2,767	1,397	494	2,582	1,088
2016M12	4,002	2,612	1,390	469	2,520	1,013
2017M01	3,917	2,553	1,365	472	2,483	962
2017M02	3,780	2,409	1,370	451	2,407	922
2017M03	3,604	2,281	1,322	427	2,293	883
2017M04	3,692	2,361	1,331	429	2,334	929
2017M05	3,555	2,221	1,333	415	2,252	888
2017M06	3,498	2,184	1,314	402	2,218	878
2017M07	4,156	2,685	1,471	463	2,667	1,025
2017M08	3,990	2,503	1,487	476	2,541	973
2017M09	3,696	2,340	1,357	440	2,278	979

month-to-month % change						
2017M08	-4.0	-6.8	1.0	2.8	-4.7	-5.1
2017M09	-7.4	-6.5	-8.8	-7.7	-10.3	0.6

year-to-year % change						
2017M08	3.9	-6.5	27.8	-13.6	6.3	8.2
2017M09	-10.9	-16.7	1.1	-16.5	-12.4	-4.3

12-mth avg, y/y % change						
2017M08	7.6	1.0	22.4	-2.3	7.3	14.0
2017M09	5.5	-1.1	20.3	-4.4	5.3	11.6

Fraser Fort George RD Average Annual EI Beneficiaries

	Total	Male	Female	15 - 24	25-54	55+
2012	2,101	1,322	782	283	1,383	437
2013	1,817	1,128	688	230	1,217	369
2014	1,593	992	602	194	1,048	353
2015	1,890	1,271	619	254	1,228	407
2016	2,154	1,482	670	303	1,356	494

Fraser Fort George RD Average Monthly EI Beneficiaries

	Total	Male	Female	15 - 24	25-54	55+
2016M08	2,229	1,590	640	364	1,374	491
2016M09	2,395	1,665	729	335	1,507	552
2016M10	2,344	1,612	732	324	1,446	574
2016M11	2,376	1,610	766	314	1,468	594
2016M12	2,326	1,545	781	312	1,459	555
2017M01	2,269	1,508	761	307	1,439	524
2017M02	2,164	1,411	753	284	1,389	490
2017M03	2,073	1,326	748	262	1,333	479
2017M04	2,081	1,350	731	266	1,324	492
2017M05	2,033	1,297	736	258	1,293	483
2017M06	1,979	1,280	699	249	1,255	474
2017M07	1,956	1,243	713	233	1,254	468
2017M08	1,869	1,160	710	224	1,205	441
2017M09	1,817	1,144	673	220	1,128	469

month-to-month % change

2017M08	-4.4	-6.7	-0.5	-4.1	-3.9	-6.0
2017M09	-2.8	-1.4	-5.1	-1.6	-6.4	6.4

year-to-year % change

2017M08	-16.2	-27.0	10.9	-38.5	-12.3	-10.4
2017M09	-24.1	-31.3	-7.6	-34.3	-25.1	-15.1

12-mth avg, y/y % change

2017M08	4.7	-1.1	17.9	-4.8	3.8	13.2
2017M09	1.6	-4.3	15.4	-8.1	0.8	9.9

Cariboo RD Average Annual EI Beneficiaries						
	Total	Male	Female	15 - 24	25-54	55+
2012	1,577	958	619	171	1,045	362
2013	1,393	825	569	148	929	321
2014	1,386	838	553	151	893	347
2015	1,498	986	513	168	959	371
2016	1,598	1,051	547	174	993	433

Cariboo RD Average Monthly EI Beneficiaries						
	Total	Male	Female	15 - 24	25-54	55+
2016M08	1,611	1,087	523	188	1,016	407
2016M09	1,755	1,143	613	191	1,093	471
2016M10	1,774	1,140	635	183	1,051	540
2016M11	1,788	1,157	631	181	1,113	494
2016M12	1,675	1,067	609	157	1,061	458
2017M01	1,648	1,044	604	165	1,044	439
2017M02	1,616	999	617	166	1,018	432
2017M03	1,530	956	575	165	961	404
2017M04	1,611	1,011	600	163	1,011	437
2017M05	1,521	924	597	157	960	404
2017M06	1,519	904	614	153	963	403
2017M07	2,200	1,442	758	230	1,413	557
2017M08	2,120	1,343	777	253	1,336	532
2017M09	1,879	1,196	683	219	1,150	510

month-to-month % change						
2017M08	-3.6	-6.8	2.5	9.8	-5.5	-4.4
2017M09	-11.4	-11.0	-12.1	-13.1	-13.9	-4.2

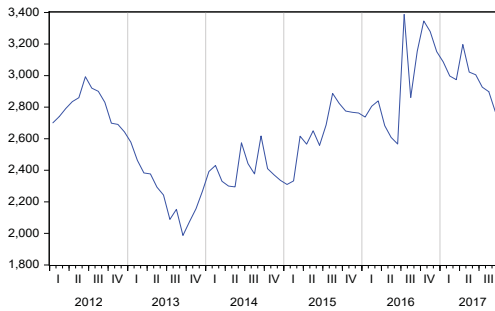
year-to-year % change						
2017M08	31.6	23.5	48.5	34.7	31.5	30.7
2017M09	7.0	4.7	11.5	14.9	5.2	8.3

12-mth avg, y/y % change						
2017M08	11.5	3.8	28.0	1.9	12.1	14.8
2017M09	10.8	3.5	26.4	1.9	11.4	13.5

Cariboo DR CAs Average Annual EI Beneficiaries			
	Williams Lake CA	Quesnel CA	Prince George CA
2012	402	553	1913
2013	360	495	1647
2014	360	510	1450
2015	384	541	1734
2016	371	621	1950
Average Monthly EI Beneficiaries			
	Williams Lake CA	Quesnel CA	Prince George CA
2016M08	368	609	1,927
2016M09	407	643	2,104
2016M10	422	647	2,097
2016M11	426	663	2,120
2016M12	398	629	2,104
2017M01	398	633	2,028
2017M02	387	630	1,974
2017M03	382	590	1,944
2017M04	392	610	1,952
2017M05	397	574	1,881
2017M06	368	605	1,862
2017M07	571	635	1,813
2017M08	614	661	1,739
2017M09	521	650	1,668
month-to-month % change			
2017M08	7.4	4.1	-4.1
2017M09	-15.2	-1.7	-4.1
year-to-year % change			
2017M08	66.8	8.5	-9.8
2017M09	28.0	1.2	-20.7
12-mth avg, y/y % change			
2017M08	24.6	2.3	5.7
2017M09	25.4	1.5	2.2

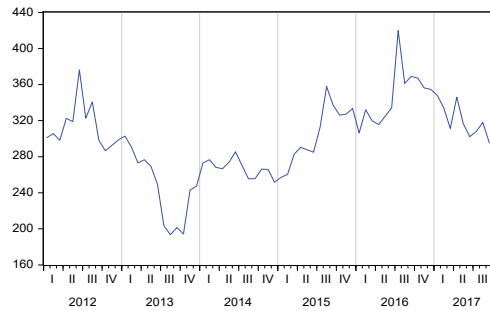
Section 7: North Coast & Nechako

**North Coast & Nechako
E.I. Beneficiaries**



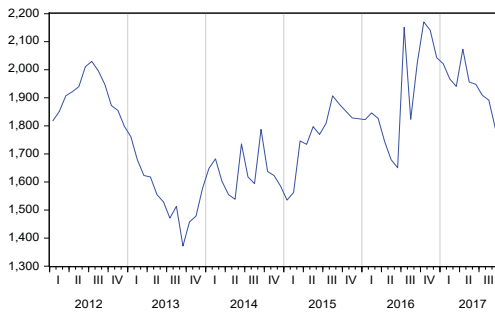
Source: Statistics Canada and Central 1 Credit Union.

**North Coast & Nechako
Age 15-24 E.I. Beneficiaries**



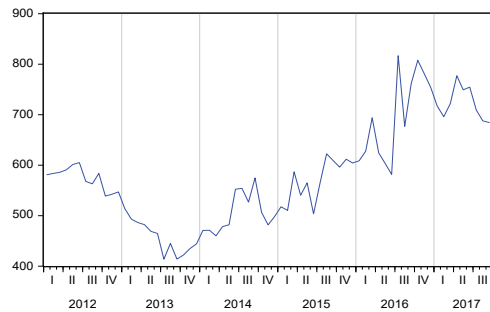
Source: Statistics Canada and Central 1 Credit Union.

**North Coast & Nechako
Age 25-54 E.I. Beneficiaries**



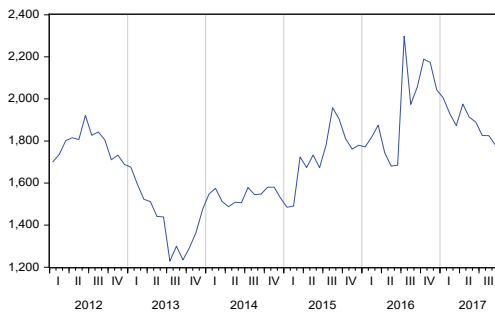
Source: Statistics Canada and Central 1 Credit Union.

**North Coast & Nechako
Age 55+ E.I. Beneficiaries**



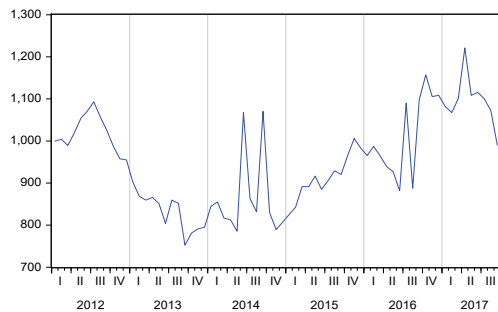
Source: Statistics Canada and Central 1 Credit Union.

**North Coast & Nechako
Male E.I. Beneficiaries**



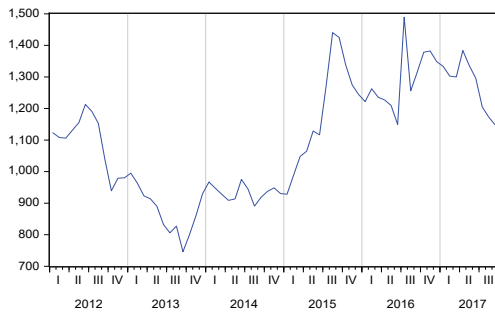
Source: Statistics Canada and Central 1 Credit Union.

**North Coast & Nechako
Female E.I. Beneficiaries**



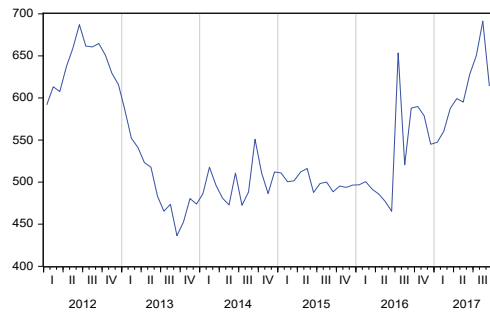
Source: Statistics Canada and Central 1 Credit Union.

**Kitimat-Stikine RD
E.I. Beneficiaries**



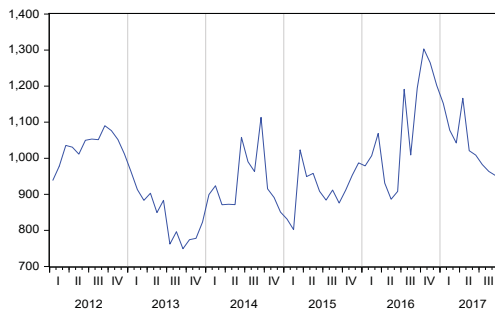
Source: Statistics Canada and Central 1 Credit Union.

**Skeena Queen Charlotte RD
E.I. Beneficiaries**



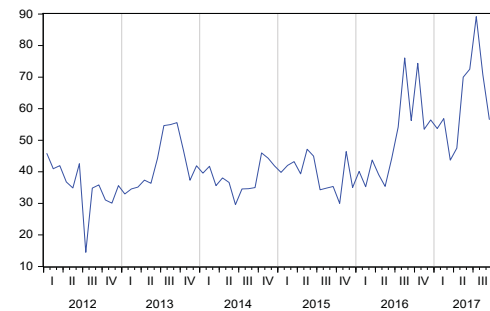
Source: Statistics Canada and Central 1 Credit Union.

**Bulkley Nechako RD
E.I. Beneficiaries**



Source: Statistics Canada and Central 1 Credit Union.

**Stikine RD
E.I. Beneficiaries**



Source: Statistics Canada and Central 1 Credit Union.

North Coast & Nechako DR Average Annual EI Beneficiaries						
	Total	Male	Female	15 - 24	25-54	55+
2012	2,796	1,779	1,018	309	1,910	577
2013	2,288	1,453	838	253	1,571	465
2014	2,398	1,545	858	268	1,629	503
2015	2,625	1,713	916	301	1,763	568
2016	2,921	1,911	1,007	340	1,896	685

North Coast & Nechako DR Average Monthly EI Beneficiaries						
	Total	Male	Female	15 - 24	25-54	55+
2016M08	2,862	1,974	888	361	1,824	677
2016M09	3,154	2,056	1,098	369	2,023	762
2016M10	3,346	2,189	1,157	367	2,171	808
2016M11	3,279	2,173	1,105	356	2,141	781
2016M12	3,152	2,043	1,109	355	2,043	754
2017M01	3,087	2,005	1,082	348	2,022	717
2017M02	2,998	1,930	1,068	334	1,967	696
2017M03	2,974	1,873	1,101	311	1,941	722
2017M04	3,197	1,976	1,221	346	2,074	777
2017M05	3,022	1,913	1,109	317	1,956	749
2017M06	3,005	1,890	1,116	302	1,949	754
2017M07	2,927	1,826	1,100	308	1,909	709
2017M08	2,898	1,825	1,072	318	1,892	688
2017M09	2,770	1,781	990	295	1,791	684

month-to-month % change						
2017M08	-1.0	0.0	-2.5	3.2	-0.9	-3.0
2017M09	-4.4	-2.5	-7.7	-7.1	-5.3	-0.5

year-to-year % change						
2017M08	1.3	-7.5	20.8	-12.0	3.8	1.6
2017M09	-12.2	-13.4	-9.9	-20.0	-11.5	-10.2

12-mth avg, y/y % change						
2017M08	9.9	7.8	14.4	0.3	9.9	15.5
2017M09	8.3	6.6	12.2	-1.5	8.8	13.0

Kitimat-Stikine RD Average Annual EI Beneficiaries						
	Total	Male	Female	15 - 24	25-54	55+
2012	1,097	741	357	129	749	219
2013	892	600	293	105	624	163
2014	936	636	302	109	650	178
2015	1,168	776	393	145	800	224
2016	1,283	842	443	169	846	270

Kitimat-Stikine RD Average Monthly EI Beneficiaries						
	Total	Male	Female	15 - 24	25-54	55+
2016M08	1,256	868	388	181	807	268
2016M09	1,315	870	445	165	875	275
2016M10	1,378	937	442	172	921	285
2016M11	1,382	942	440	175	931	276
2016M12	1,348	907	441	162	906	281
2017M01	1,333	906	427	160	917	256
2017M02	1,302	878	424	156	898	248
2017M03	1,300	849	451	153	879	268
2017M04	1,384	919	464	157	941	286
2017M05	1,336	879	457	147	894	294
2017M06	1,296	834	462	144	879	272
2017M07	1,204	763	442	130	810	265
2017M08	1,172	742	431	133	790	250
2017M09	1,147	735	412	135	775	237

month-to-month % change						
2017M08	-2.7	-2.8	-2.5	2.2	-2.5	-5.5
2017M09	-2.2	-0.9	-4.3	1.6	-1.8	-5.4

year-to-year % change						
2017M08	-6.6	-14.5	11.0	-26.5	-2.2	-6.8
2017M09	-12.8	-15.6	-7.4	-18.1	-11.4	-14.0

12-mth avg, y/y % change						
2017M08	4.0	6.6	-0.7	-7.9	7.1	2.2
2017M09	3.6	6.5	-1.5	-8.4	6.9	1.3

Skeena Queen Charlotte RD Average Annual EI Beneficiaries						
	Total	Male	Female	15 - 24	25-54	55+
2012	634	343	292	51	435	150
2013	508	293	215	47	343	118
2014	498	298	202	43	338	118
2015	499	313	188	51	328	124
2016	528	334	193	49	344	133

Skeena Queen Charlotte RD Average Monthly EI Beneficiaries						
	Total	Male	Female	15 - 24	25-54	55+
2016M08	521	348	172	37	353	130
2016M09	588	370	217	58	384	146
2016M10	590	368	222	55	372	163
2016M11	579	371	208	53	378	147
2016M12	545	340	205	48	359	138
2017M01	547	337	211	48	359	140
2017M02	560	352	209	50	356	155
2017M03	588	355	232	48	381	158
2017M04	599	361	239	53	372	174
2017M05	595	362	233	56	372	167
2017M06	628	387	241	49	384	196
2017M07	650	402	248	68	415	168
2017M08	691	443	249	71	443	178
2017M09	614	397	217	56	387	172

month-to-month % change						
2017M08	6.3	10.1	0.2	4.2	6.7	6.1
2017M09	-11.1	-10.2	-12.6	-21.2	-12.5	-3.5

year-to-year % change						
2017M08	32.8	27.0	44.5	90.5	25.4	36.4
2017M09	4.5	7.2	-0.1	-3.6	0.8	17.6

12-mth avg, y/y % change						
2017M08	17.1	15.3	21.1	6.7	15.8	25.8
2017M09	16.1	14.6	19.5	6.7	14.9	26.3

Bulkley Nechako RD Average Annual EI Beneficiaries						
	Total	Male	Female	15 - 24	25-54	55+
2012	1,028	672	356	124	702	199
2013	851	535	316	99	577	178
2014	925	587	340	113	616	198
2015	919	598	321	103	610	208
2016	1,059	703	355	118	678	265

Bulkley Nechako RD Average Monthly EI Beneficiaries						
	Total	Male	Female	15 - 24	25-54	55+
2016M08	1,009	697	313	141	623	245
2016M09	1,195	775	420	144	734	317
2016M10	1,303	825	479	137	834	333
2016M11	1,265	830	435	128	797	340
2016M12	1,202	760	442	129	751	322
2017M01	1,153	730	423	124	721	307
2017M02	1,078	665	413	110	686	282
2017M03	1,043	640	403	109	652	282
2017M04	1,166	663	503	128	736	302
2017M05	1,021	631	390	113	651	256
2017M06	1,009	624	385	109	641	258
2017M07	983	601	381	104	635	244
2017M08	963	600	363	106	614	243
2017M09	952	608	345	95	601	256

month-to-month % change						
2017M08	-2.0	-0.2	-4.7	2.3	-3.2	-0.5
2017M09	-1.2	1.2	-5.1	-10.3	-2.2	5.6

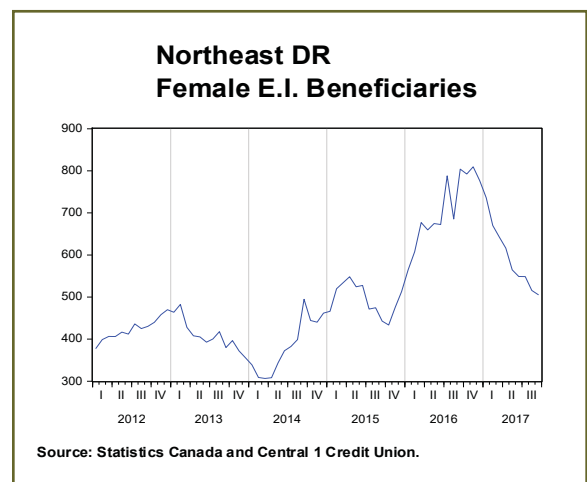
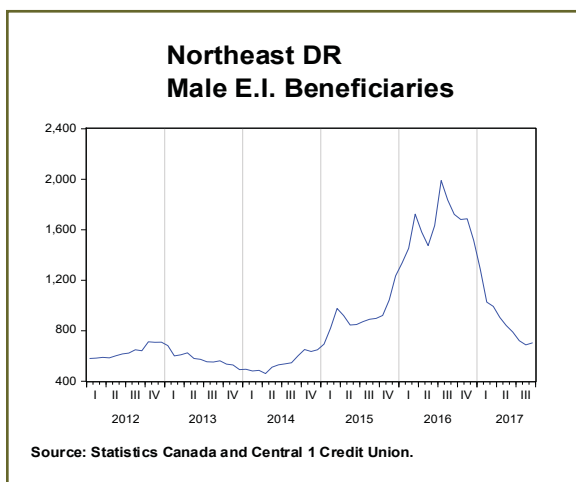
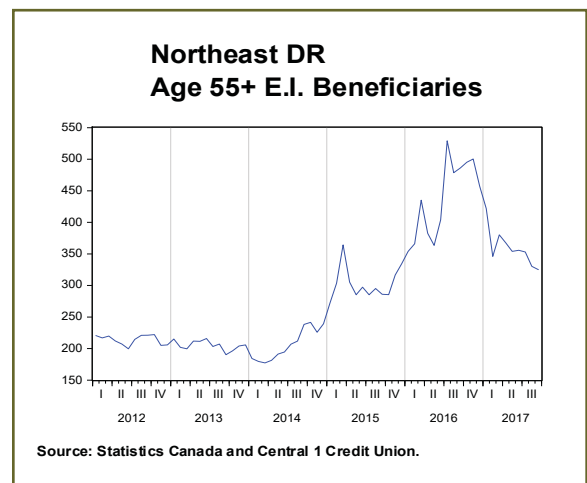
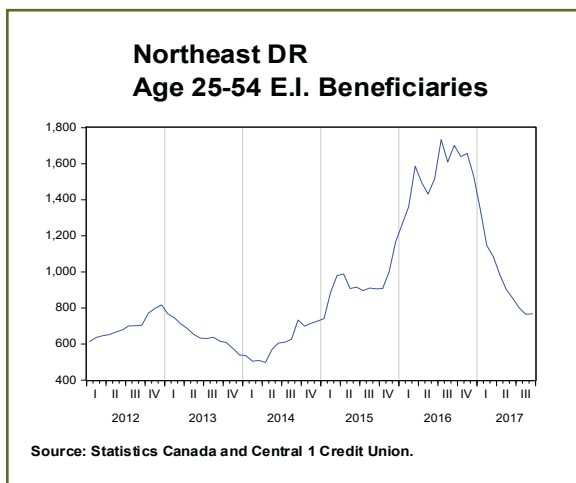
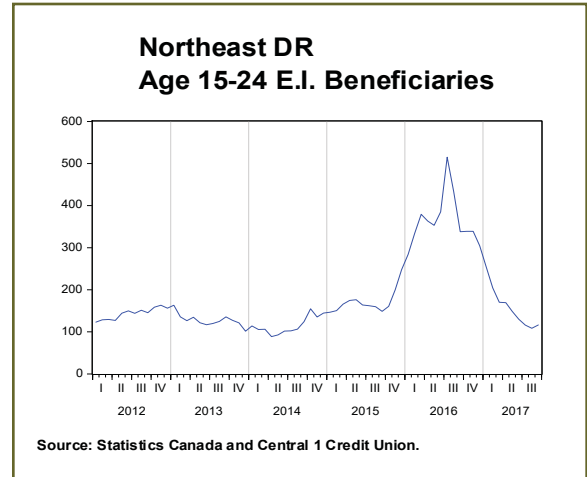
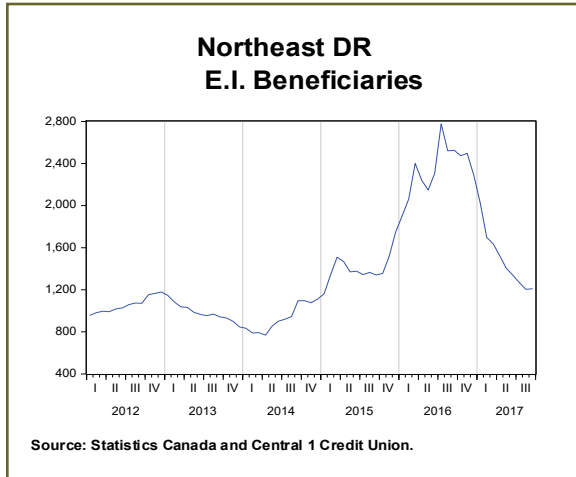
year-to-year % change						
2017M08	-4.5	-13.8	16.2	-24.4	-1.4	-1.0
2017M09	-20.3	-21.6	-17.9	-33.8	-18.2	-19.1

12-mth avg, y/y % change						
2017M08	12.6	4.3	30.5	10.0	9.3	23.5
2017M09	9.2	1.5	25.6	5.3	6.9	18.2

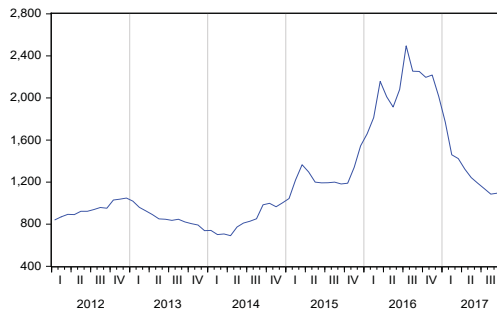
Stikine RD Average Annual EI Beneficiaries						
	Total	Male	Female	15 - 24	25-54	55+
2012	38	23	14	5	24	8
2013	37	26	14	3	27	7
2014	38	25	14	3	25	9
2015	38	26	14	2	26	13
2016	51	32	16	4	28	17
Stikine RD Average Monthly EI Beneficiaries						
	Total	Male	Female	15 - 24	25-54	55+
2016M08	76	61	15	na	40	33
2016M09	56	41	15	na	30	24
2016M10	74	59	15	na	45	27
2016M11	53	31	22	na	35	18
2016M12	56	36	21	na	27	14
2017M01	54	33	21	na	24	14
2017M02	57	35	21	na	27	11
2017M03	44	29	14	na	29	14
2017M04	47	33	15	na	25	14
2017M05	70	42	28	na	38	32
2017M06	73	44	28	na	44	28
2017M07	89	60	29	na	50	33
2017M08	71	41	30	na	45	17
2017M09	57	41	15	na	27	20
month-to-month % change						
2017M08	-20.6	-31.4	2.0	na	-9.3	-47.4
2017M09	-20.1	-0.3	-47.8	na	-39.6	14.7
year-to-year % change						
2017M08	-6.9	-32.7	100.4	na	12.9	-47.4
2017M09	0.6	0.6	0.8	na	-7.9	-17.0
12-mth avg, y/y % change						
2017M08	37.3	45.2	38.9	na	46.4	43.7
2017M09	34.6	40.6	38.9	na	37.9	29.4

North Coast/Nechako DR CAs Average Annual EI Beneficiaries		
	Prince Rupert CA	Terrace CA
2012	432	389
2013	333	333
2014	319	330
2015	315	423
2016	335	462
Average Monthly EI Beneficiaries		
	Prince Rupert CA	Terrace CA
2016M08	317	454
2016M09	343	449
2016M10	321	479
2016M11	327	502
2016M12	322	525
2017M01	339	514
2017M02	340	515
2017M03	356	501
2017M04	359	514
2017M05	356	482
2017M06	369	475
2017M07	354	442
2017M08	366	444
2017M09	333	438
month-to-month % change		
2017M08	3.4	0.4
2017M09	-9.1	-1.3
year-to-year % change		
2017M08	15.4	-2.2
2017M09	-2.9	-2.3
12-mth avg, y/y % change		
2017M08	6.7	6.8
2017M09	5.3	7.0

Section 8: Northeast

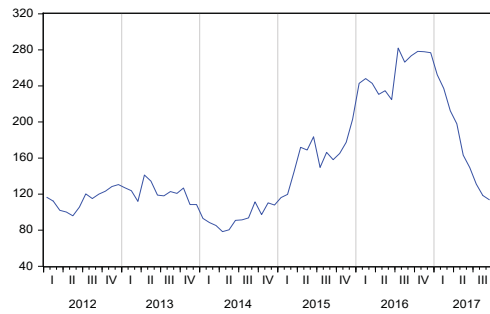


Peace River RD E.I. Beneficiaries



Source: Statistics Canada and Central 1 Credit Union.

Northern ResRD E.I. Beneficiaries



Source: Statistics Canada and Central 1 Credit Union.

Northeast DR Average Annual EI Beneficiaries						
	Total	Male	Female	15 - 24	25-54	55+
2012	1,052	628	423	143	697	213
2013	983	577	408	128	651	206
2014	921	541	382	113	606	205
2015	1,399	908	494	170	928	302
2016	2,338	1,628	709	363	1,543	436
Northeast DR Average Monthly EI Beneficiaries						
	Total	Male	Female	15 - 24	25-54	55+
2016M08	2,521	1,835	686	433	1,609	479
2016M09	2,526	1,722	804	338	1,702	486
2016M10	2,474	1,681	792	339	1,640	495
2016M11	2,496	1,687	809	339	1,657	500
2016M12	2,292	1,515	777	305	1,530	457
2017M01	2,024	1,289	736	254	1,348	422
2017M02	1,697	1,027	670	204	1,146	346
2017M03	1,636	993	643	170	1,085	380
2017M04	1,522	906	616	169	985	367
2017M05	1,406	841	564	149	903	354
2017M06	1,339	790	549	130	853	356
2017M07	1,269	721	549	116	800	353
2017M08	1,204	688	516	109	765	330
2017M09	1,209	704	505	116	768	325
month-to-month % change						
2017M08	-5.1	-4.5	-6.0	-6.4	-4.4	-6.4
2017M09	0.4	2.2	-2.0	7.2	0.3	-1.6
year-to-year % change						
2017M08	-52.2	-62.5	-24.8	-74.9	-52.5	-31.0
2017M09	-52.1	-59.1	-37.1	-65.6	-54.9	-33.1
12-mth avg, y/y % change						
2017M08	-14.1	-23.5	8.1	-35.0	-14.4	4.1
2017M09	-21.7	-30.9	0.0	-42.2	-22.3	-2.1

Peace River RD Average Annual EI Beneficiaries						
	Total	Male	Female	15 - 24	25-54	55+
2012	937	566	371	130	619	186
2013	862	518	346	112	573	179
2014	828	489	340	101	545	185
2015	1,238	813	428	148	830	263
2016	2,079	1,465	616	325	1,373	383
Peace River RD Average Monthly EI Beneficiaries						
	Total	Male	Female	15 - 24	25-54	55+
2016M08	2,254	1,660	594	389	1,442	423
2016M09	2,252	1,557	695	303	1,521	429
2016M10	2,196	1,510	686	314	1,444	437
2016M11	2,218	1,519	699	298	1,481	439
2016M12	2,015	1,349	666	272	1,346	397
2017M01	1,772	1,136	636	225	1,185	362
2017M02	1,460	893	567	174	991	294
2017M03	1,423	871	552	152	942	329
2017M04	1,324	797	527	147	857	320
2017M05	1,243	752	491	132	804	307
2017M06	1,190	714	476	120	765	305
2017M07	1,138	655	483	106	722	309
2017M08	1,085	633	453	99	696	291
2017M09	1,095	645	451	104	700	291
month-to-month % change						
2017M08	-4.6	-3.3	-6.4	-7.0	-3.7	-6.0
2017M09	0.9	1.9	-0.4	5.6	0.6	0.0
year-to-year % change						
2017M08	-51.9	-61.9	-23.9	-74.6	-51.8	-31.3
2017M09	-51.4	-58.6	-35.2	-65.5	-54.0	-32.2
12-mth avg, y/y % change						
2017M08	-14.8	-24.1	7.7	-34.5	-15.2	3.5
2017M09	-22.3	-31.5	-0.2	-41.9	-23.0	-2.9

Northern ResRD Average Annual EI Beneficiaries						
	Total	Male	Female	15 - 24	25-54	55+
2012	115	62	53	13	78	28
2013	122	59	63	16	78	27
2014	93	52	42	12	61	20
2015	162	95	66	23	98	39
2016	258	163	93	38	170	53
Northern ResRD Average Monthly EI Beneficiaries						
	Total	Male	Female	15 - 24	25-54	55+
2016M08	266	175	91	44	167	55
2016M09	273	165	109	35	181	57
2016M10	278	172	107	25	195	58
2016M11	278	167	111	41	176	61
2016M12	277	166	111	32	184	60
2017M01	252	152	100	29	163	60
2017M02	237	134	103	30	155	52
2017M03	212	122	91	18	143	51
2017M04	198	109	89	22	128	48
2017M05	163	89	74	17	99	47
2017M06	150	76	73	10	89	51
2017M07	131	66	65	10	78	43
2017M08	119	55	63	10	69	39
2017M09	114	59	55	12	68	34
month-to-month % change						
2017M08	-9.6	-15.9	-3.3	0.9	-11.2	-9.2
2017M09	-4.0	6.5	-13.3	23.4	-2.3	-13.7
year-to-year % change						
2017M08	-55.5	-68.4	-30.6	-78.1	-58.5	-28.5
2017M09	-58.4	-64.2	-49.6	-66.4	-62.5	-40.3
12-mth avg, y/y % change						
2017M08	-8.1	-17.8	10.3	-38.6	-7.4	8.6
2017M09	-16.3	-25.6	1.0	-44.4	-16.5	3.4

Northeast DR CAs Average Annual EI Beneficiaries		
	Dawson Creek CA	Fort St. John CA
2012	210	388
2013	183	305
2014	168	281
2015	218	473
2016	401	1,024
Average Monthly EI Beneficiaries		
	Dawson Creek CA	Fort St. John CA
2016M08	417	1,133
2016M09	423	1,162
2016M10	401	1,122
2016M11	409	1,113
2016M12	377	1,066
2017M01	333	929
2017M02	296	744
2017M03	242	671
2017M04	269	579
2017M05	268	531
2017M06	259	514
2017M07	247	493
2017M08	246	496
2017M09	238	504
month-to-month % change		
2017M08	-0.8	0.6
2017M09	-3.2	1.6
year-to-year % change		
2017M08	-41.1	-56.2
2017M09	-43.8	-56.6
12-mth avg, y/y % change		
2017M08	-8.5	-5.8
2017M09	-16.9	-17.5